



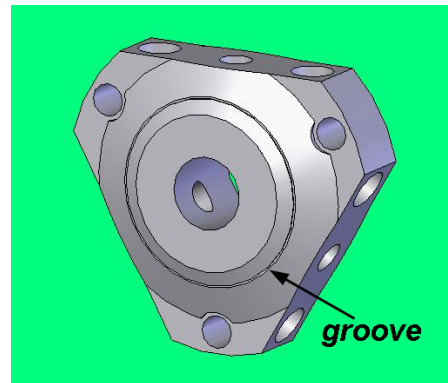
Cobra Motorcycle Mfg.

240 Uran street
Hillsdale, MI 49242

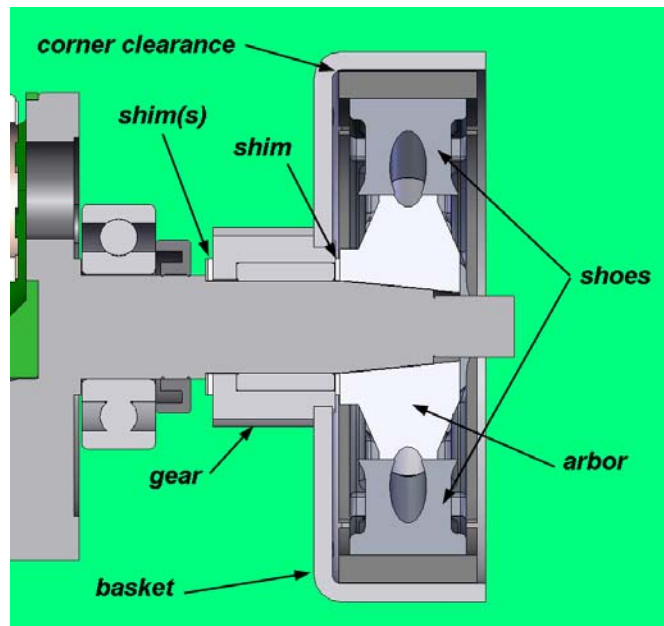
(517) 437-9100 phone
(517) 437-9101 fax

TSB01611 New style Clutch Shoes

Cobra is switching over to a new manufacturing process to produce the aluminum base for our clutch shoes (see picture below left).



This style of shoes are slightly wider and require an ECMU0040 (0.8mm or 0.030" spacer) between the clutch arbor and the clutch basket to avoid undesired contact. If the shoes are used with the latest clutch arbor (shown on the right, with the identification groove) then there is space on the crankshaft for an ECMU0040 between the arbor and the basket as well as one behind the basket as they always has been. This will insure that the shoes have corner clearance with respect to the radius inside the clutch basket (see below).



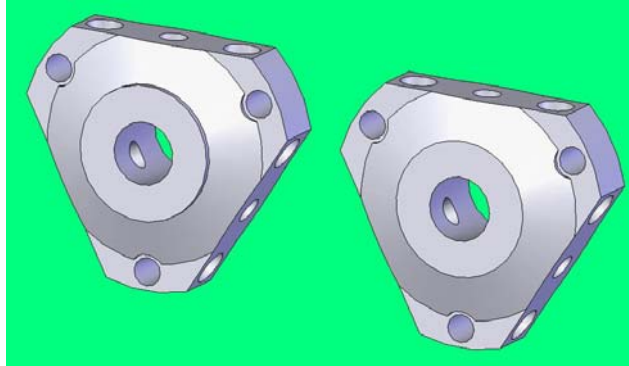


Technical Service Bulletin

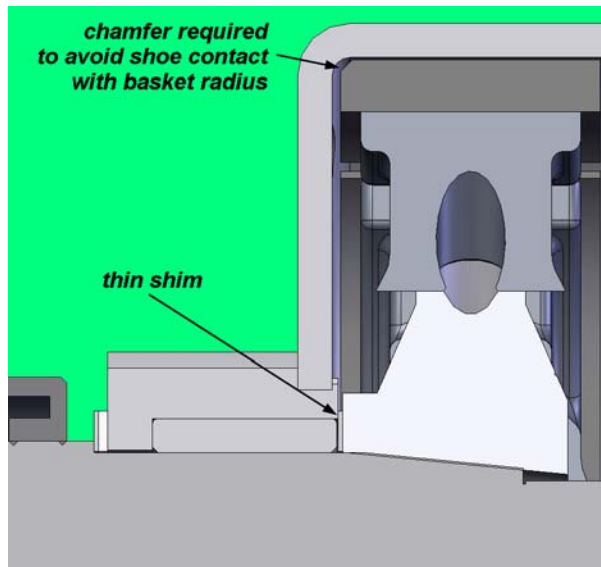
Cobra Motorcycle Mfg.

240 Uran street
Hillsdale, MI 49242

(517) 437-9100 phone
(517) 437-9101 fax



If the shoes are being applied to an older arbor (shown above without the identification groove), the ECMU0040 (0.8mm or 0.030" spacer) is still required between the arbor and the basket but there will likely not be space for the usual shim behind the basket. In fact depending on the age of the arbor, it may not be possible to get a shim between the arbor and the basket. If this is the case, then it may be necessary to take a file and create a 1.0mm (0.040") chamfer in the edge of the shoes facing the clutch basket as shown below.



CAUTION:

If there is not enough clearance to even install the thin shim (0.4mm, 0.015") then the arbor must be replaced because there is no way to insure that the shoe won't just rub in the inside surface of the basket.

For customers with engines built prior to 2006, they must purchase CCMU0029 clutch arbor before using these clutch shoes and washers.