

*2007 King 50*

**@bra**



**CHAMPIONS START HERE.™**

*Owners  
Parts  
Service  
Tuning*

**For parts orders contact your local dealer**

To locate your closest Cobra dealer

log on to

[www.cobramotorcycle.com](http://www.cobramotorcycle.com)

or call

(517) 437-9100

If you need **technical assistance**

contact your local dealer or call

the Cobra Technical Support Hotline at

(517) 437-9100



Cobra Motorcycle MFG., Inc.

240 Uran Road

Hillsdale, MI 49242

## DISCLAIMER OF WARRANTY

*This motorcycle is sold "as is" with all faults, obvious or not. There are no warranties expressed or implied, including any warranty of merchantability and warranty of fitness for any particular purpose.*

## **"WARNING"**

THE COBRA CX50SR IS A COMPETITION MODEL ONLY AND IS **NOT** MANUFACTURED FOR, NOR SHOULD IT BE USED ON PUBLIC STREETS, ROADS OR HIGHWAYS.

THE USE OF THIS BIKE SHOULD BE LIMITED TO PARTICIPATION IN SANCTIONED COMPETITION EVENTS UPON A CLOSED COURSE BY A SUFFICIENTLY SKILLED RIDER AND SHOULD NOT BE USED FOR GENERAL OFF-ROAD RECREATIONAL RIDING.

IMPROPER USE OF THIS MOTORCYCLE CAN CAUSE INJURY OR DEATH.

THIS BIKE IS INTENDED FOR EXPERIENCED RACERS ONLY AND NOT FOR BEGINNERS.

IT IS YOUR RESPONSIBILITY AS THE OWNER OF THIS COBRA MOTORCYCLE OR AS THE PARENT, OR LEGAL GUARDIAN OF THE OPERATOR, TO KEEP THIS COBRA MOTORCYCLE IN PROPER OPERATING CONDITION.

THIS BIKE WAS DESIGNED FOR RIDERS THAT WEIGH LESS THAN 80 LBS WITH FULL RIDING GEAR AND SHOULD NOT BE OPERATED BY RIDERS THAT WEIGH MORE THAN THAT.

BE SURE THAT THE RIDER ALWAYS WEARS ADEQUATE SAFETY GEAR EVERYTIME HE OR SHE RIDES THEIR COBRA MOTORCYCLE.

## IMPORTANT SAFETY NOTICE

### **WARNING**

Failure to follow WARNING instructions could result in severe injury or death to the machine operator, a bystander, or a person inspecting or repairing the machine.

### **CAUTION:**

A CAUTION indicates special precautions that must be taken to avoid damage to the machine.

### **NOTE:**

A NOTE provides key information to make procedures easier or clearer.

# Table Of Contents

|                                                   |    |
|---------------------------------------------------|----|
| GENERAL INFORMATION.....                          | 5  |
| SPECIFICATIONS - GENERAL .....                    | 5  |
| OPTIONAL COMPONENTS.....                          | 6  |
| SPECIFICATIONS - TORQUE VALUES .....              | 6  |
| BREAK-IN PROCEDURE.....                           | 8  |
| STARTING PROCEDURE .....                          | 9  |
| MAINTENANCE.....                                  | 10 |
| TIPS .....                                        | 10 |
| SCHEDULE .....                                    | 11 |
| REPLACING TRANSMISSION / CLUTCH LUBRICANT.....    | 12 |
| PROPER CHAIN ADJUSTMENT .....                     | 14 |
| REAR BRAKE MAINTENANCE .....                      | 14 |
| AIR FILTER CLEANING .....                         | 16 |
| FORK OIL REPLACEMENT .....                        | 19 |
| FRICTIONAL DRIVE (CFD) .....                      | 20 |
| PARTS.....                                        | 21 |
| PARTS – AIRBOX & INLET SYSTEM .....               | 21 |
| PARTS – BARS AND CONTROLS .....                   | 22 |
| PARTS - CARBURETOR .....                          | 23 |
| PARTS – COOLANT SYSTEM .....                      | 24 |
| PARTS – ELECTRICAL SYSTEM.....                    | 25 |
| PARTS – ENGINE – BOTTOM END AND TRANSMISSION..... | 26 |
| Parts – Engine Clutch and Kicker .....            | 27 |
| Parts – Engine – Ignition and Water Pump.....     | 28 |
| Parts – Engine – Top End.....                     | 29 |
| PARTS – EXHAUST SYSTEM.....                       | 30 |
| PARTS – FORKS & TRIPLE CLAMPS.....                | 31 |
| PARTS – FORKS – LEG ASSEMBLY .....                | 32 |
| PARTS – FRAME I .....                             | 33 |
| Parts – Frame II.....                             | 34 |

|                                             |    |
|---------------------------------------------|----|
| PARTS – FRONT BRAKES.....                   | 35 |
| PARTS – FRONT WHEEL.....                    | 36 |
| PARTS – PLASTIC BODYWORK & SEAT .....       | 37 |
| PARTS – REAR BRAKE .....                    | 38 |
| PARTS – REAR WHEEL.....                     | 39 |
| PARTS – SHOCK.....                          | 40 |
| PARTS – SWINGARM ASSEMBLY.....              | 41 |
| SERVICE .....                               | 42 |
| ENGINE SERVICE .....                        | 42 |
| Base Gasket Selection .....                 | 43 |
| Engine Removal .....                        | 45 |
| Complete Engine Disassembly Procedure ..... | 46 |
| Top End Disassembly Procedure .....         | 46 |
| Splitting the Cases.....                    | 47 |
| Engine assembly .....                       | 48 |
| CLUTCH .....                                | 50 |
| IGNITION .....                              | 54 |
| COOLING SYSTEM.....                         | 56 |
| FUEL & AIR SYSTEM .....                     | 60 |
| EXHAUST .....                               | 63 |
| WHEELS & TIRES.....                         | 64 |
| BRAKES .....                                | 64 |
| FRONT FORKS .....                           | 65 |
| REAR SHOCK .....                            | 67 |
| TUNING .....                                | 68 |
| GEARING.....                                | 68 |
| SUSPENSION .....                            | 70 |
| CARBURETION.....                            | 71 |
| TROUBLESHOOTING.....                        | 74 |
| INDEX.....                                  | 75 |

# General Information

## Specifications - General

| Items                          | CX50 SR                                                            |
|--------------------------------|--------------------------------------------------------------------|
| <b>Dimensions</b>              |                                                                    |
| Wheelbase                      | 39" (991mm)                                                        |
| Wheel size                     | 10" (254mm) rear, 12" (305mm) front                                |
| Seat height                    | 26" (660mm)                                                        |
| <b>Engine</b>                  |                                                                    |
| Type                           | 2-stroke, single cylinder, reed valve                              |
| Cooling system                 | Liquid-cooled                                                      |
| Coolant                        | 50/50 antifreeze-coolant / distilled water                         |
| Displacement                   | 49.8 cc                                                            |
| Bore and stroke                | 39 mm x 41.7 mm, "V" head                                          |
| Ignition system                | Electronic, analog advance                                         |
| Spark plug                     | Champion 8339-1, 8332-1 hotter, 8904-1 colder                      |
| Gap                            | 0.023" – 0.025" (0.58 – 0.64 mm)                                   |
| Ignition timing                | 0.040" (1.02 mm) Before Top Dead Center (BTDC)                     |
| Fuel type                      | High octane pump gasoline<br><b>RACE FUELS ARE NOT RECOMMENDED</b> |
| Oil type                       | <i>Cobra Venom 2-cycle Race Oil</i>                                |
| Fuel / oil mix ratios          | Between 32:1 and 40:1 (after engine Break-In)                      |
| Carburetion                    | 19 mm Dell'Orto                                                    |
| Main Jet                       | 95                                                                 |
| Slow (Pilot) Jet               | 60                                                                 |
| Float Height                   | 16mm ± 0.5mm (0.63" ± 0.020")                                      |
| <b>Transmission</b>            |                                                                    |
| Speed                          | Single                                                             |
| Final drive ratio              | 14/38 T                                                            |
| Chain                          | 100 links 420                                                      |
| Transmission / clutch oil type | <i>Cobra Venom 3 Shoe Clutch Milk</i>                              |
| Quantity                       | 235 ml (8.0oz)                                                     |

|                            |                 |                                                        |
|----------------------------|-----------------|--------------------------------------------------------|
| <b>Chassis</b>             |                 |                                                        |
| Front tire                 |                 | 2.50 - 12                                              |
|                            | Pressure        | 16 psi minimum                                         |
| Rear tire                  |                 | 2.75 - 10                                              |
|                            | Pressure        | 16 psi min. (20 psi for hard pack or rocky conditions) |
| Front fork                 |                 | Cobra 30mm USD                                         |
|                            | Fork oil type   | SAE 5 weight                                           |
|                            | Fork oil amount | 107 ml (3.6oz)                                         |
| Rear shock (std. settings) |                 | Compression 16 clicks out<br>Rebound 12 clicks out     |

## Optional Components

Call your dealer, or the factory, for details

- Carburetor jets
- Flat clutch washers (see clutch service section)
- Pre filter for the airbox
- Sprockets
  - Front
  - Rear
- Suspension Springs

| Weight of Rider (lb) | Fork Spring            | Shock Spring                  |
|----------------------|------------------------|-------------------------------|
| Less than 51         | 0.23 kg/mm<br>KCKG1223 | gray, 3.5 kg/mm<br>SCKGFX35   |
| 51 - 60              | 0.25 kg/mm<br>KCKG1206 | yellow, 3.7 kg/mm<br>SCKGFX37 |
| Greater than 60      | 0.27 kg/mm<br>KCKG1227 | gold, 3.9 kg/mm<br>SCKGFX39   |

- Tires, tubes or 'Tire Balls'

## Specifications - Torque Values

| Fastener           | Torque Value |       |    | Size & Remarks |
|--------------------|--------------|-------|----|----------------|
|                    | ft-lb        | in-lb | Nm |                |
| Cylinder head nuts | 8.8          | 105   | 12 | M6 x 1.0       |
| Crankcase          | 8.8          | 105   | 12 | M6 x 1.0       |

|                             |      |      |      |             |
|-----------------------------|------|------|------|-------------|
| bolts                       |      |      |      |             |
| Spark plug                  | (SP) | (SP) | (SP) | M14 x 1.25  |
| Stator bolts                | 2.1  | 25   | 2.8  | M5 X 0.8    |
| Stator cover bolts          | 1.7  | 20   | 2.3  | M4 X 0.75   |
| Clutch cover bolts          | 5.8  | 70   | 7.9  | M6 X 1.0    |
| Clutch nut                  | 35   | 420  | 47   | M10 x 1.25* |
| Clutch bolts                | 12   | 144  | 16   | M6 x 1.0    |
| CFD nut                     | 55   | 664  | 75   | ½" x 20 LHT |
| Front axle nut              | 25   | 300  | 34   | M12 x 1.25  |
| Engine mount bolts          | 22   | 265  | 30   | M8 X 1.25   |
| Swingarm Pivot              | 21   | 250  | 28   | M14 X 2.0   |
| Intake manifold bolts       | 4.6  | 55   | 6.2  | M6 X 1.0    |
| Rear Axle Bolt              | 25   | 300  | 34   | M12 X 1.25  |
| Rear Sprocket Bolts         | 18   | 216  | 24   | 7 mm        |
| Fork cartridge rod          | 12   | 144  | 16   |             |
| Triple clamp bolts (bottom) | 6    | 72   | 8    | M6 x 1.0    |
| Triple clamp bolts (top)    | 9    | 108  | 12   | M6 x 1.0    |
| Fork cap                    | 5    | 60   | 6.7  | 1.25" x 18  |
| Ignition rotor nut          | 40   | 480  | 54   | M10 x 1.25* |

\* Apply high strength thread locking agent when installing

**(SP)** To apply the proper torque to the spark plug when inserting, one must first screw the spark plug in until the metal gasket ring causes resistance and then turn another 1/8 to ¼ turn.



# Break-In Procedure

Your Cobra CX50 SR is a close-tolerance high performance machine and break-in time is very important for maximum life and performance. The CX50 SR can be ridden hard after the first ½ hour break-in time but it is recommended that no adjustments are made to the carburetion or suspension until the full 8 hours of bike break-in has elapsed. Also, after the engine, transmission, and drive train have been broken-in for the full 8 hours, the bike will be faster!

Use a fuel / oil mixture of 32:1 for the full 8 hour break-in period. Be sure to use high-octane pump gas, with Cobra's specially formulated *Cobra Venom 2-cycle Race Oil*. (Part # MCMUOL02)

## **CAUTION:**

Failure to use proper fuel, oil, or fuel/oil mixture may result in premature engine wear or damage to the machine.

Adhering to the following break-in schedule will result in long lasting high performance machine.

- Start bike on stand
- First 5 minute period, operate the bike on the stand with a combination of idle and high RPM operation. (avoid prolonged high RPM but spin the rear wheel good at least once or twice per minute)
- Allow bike to cool
- Ride for 15 minutes maximum (avoid prolonged high RPM operation and avoid abusing the clutch with throttle blipping.
- Cool and inspect bike for loose fasteners.
- Next ½ hour of operation, avoid prolonged operation at Wide Open Throttle.
- After 1 hour of operation
  - Check for loose bolts and nuts on the bike and retighten as necessary (proper torque values are listed under Specifications).
  - Clean the carburetor bowl.
  - Change the transmission / clutch lubricant.
- After 8 hours of operation
  - Change the fork oil.
  - Have a Certified Cobra Mechanic change the shock oil.
- Your bike is now ready for the highest level of competition!

## **NOTE:**

During break-in the bike will likely lose some engine coolant through the radiator overflow hose. Losing up to 4 oz (120 ml, ½ cup) is normal. Proper coolant level will cover the top of the radiator cores. Removing the radiator cap and looking inside is the only way to check the coolant level.

**⚠ WARNING**

Never open the radiator cap of a machine that has a hot or warm engine or one that has recently been ridden. Burning and scalding could occur.

**CAUTION:**

It is important that the radiator cap is installed correctly and completely otherwise engine damage could occur.

## Starting Procedure

Before starting the machine inspect the following:

- Check for proper tire pressure in both tires.
- Observe the chain tension and adjust if necessary.
- Observe the coolant level and fill if necessary.
- Verify that the chain rollers and sliders do not have improper wear.
- Verify that the handlebars are tight.
- Check the throttle for smooth operation and that it 'clacks' shut properly.
- Check for loose bolts and nuts, and re-torque as necessary.
- Verify that the air filter is clean and properly saturated with oil.
- Insure that the fuel tank contains an adequate volume of fuel / oil mixture to complete the distance required. (High octane pump gas with Cobra's specially formulated *Cobra Venom 2-cycle Race Oil*)
- Turn the fuel on by rotating the fuel petcock knob to the vertically downward position (reserve position is horizontally forward)

**CAUTION:**

For best results from your Cobra Motorcycle use only the recommended fuels. Testing has shown that most 'race' fuels actually degrade performance.

**⚠ WARNING**

Always wear a helmet and other protective riding gear.

When your pre-ride inspection is complete the bike may be started. For a cold engine follow this procedure.

1. Place the motorcycle on a stand of sufficient strength that positions the motorcycle in a level upright position with the rear wheel off the ground.
2. Pull up the choke knob and turn it to lock it.
3. Kick start the engine.
4. Rev the engine in short spurts, turning the throttle no more than 1/4 open until the engine will run without the choke.
5. Verify a functional engine shut-off switch by shutting off the engine.
6. Restart the engine and proceed with riding when the engine is sufficiently warm (i.e. the side of the cylinder is warm to touch).

**CAUTION:**

Never rev an engine full throttle when it's cold or slightly warmed up. Also, for best clutch performance, warm up the bike before taking off.

**⚠ WARNING**

This is a high performance race motorcycle. Too much application of throttle will likely land your little racer on his or her arse. Fenders can be replaced but bruised egos and other body parts take longer.

**CAUTION:**

Cobra recommends that you tell your child to take it easy the first couple of minutes in practice until the engine comes up to full operating temperature.

**CAUTION:**

Make sure your riders' foot is not resting on the foot brake while they are riding.

## Maintenance

It is important that you adhere to this maintenance schedule so as to promote the longevity of your Cobra Motorcycle.

### Tips

1. Cobra lubricants:
  - a. Cobra Clutch Milk has been specifically formulated to meet the stringent temperature, frictional, and load requirements unique to the high engine speeds and centrifugal clutch of the Cobra 50cc motorcycles.
  - b. Cobra Two Cycle Oil exceeds the JASO FD & ISO-L-EGD specifications, which are the worlds most stringent requirements on lubrication, detergency, and smoke. Use only a 2-cycle oil that meets these specifications.
2. Filling your transmission with more than 8.0 oz (235 cc) of lubricant may help to transfer heat from the clutch. Filling with more than 12 oz (295 cc) will degrade performance.
3. The cylinder base gasket has been 'fitted' for your engine. The code number stamped into the engine cases will guide you to what thickness base gasket is required during a common top end service. See the service section of this manual to correspond a code number with a base gasket part number.
4. Evaluate the bikes jetting only after it has been warmed up to race temperatures.
5. A properly maintained machine is safer, faster, and more fun to ride.
6. New chains will stretch on first use. Never install a new chain prior to a race. Always 'break' them in during practice.

7. Your Cobra Motorcycle has a 10 digit VIN (Vehicle Identification Number). The first two digits indicate the model and the seventh indicates the model year (MY).
  - a. Example, Acxxxx7xxx is a 2007 MY CX50 SR.

## Schedule

- Between each ride
  - Check the air filter (clean and re-oil as necessary).
  - Insure the smooth operation of the throttle cable (throttle soundly 'clacks' shut).
  - Check for frayed strands of the throttle cable inside the throttle housing and replace if necessary.
  - Check for adequate tire pressures and adjust if necessary.
  - Check all nuts and bolts for proper torque and re-torque if necessary.
  - Spray all moving parts with WD40 or other light oil.
  - Check drive chain for
    - Proper tension and adjust if necessary.
    - Adequate lubrication and lubricate if necessary.
  - Insure that the ignition stator and rotor are clean and dry.
  - Check the frame for cracks in the metal or cracks in the paint that might indicate that the metal has been stressed beyond it's safe limits. Replace or get properly rewelded as necessary.
  - Check the rims for signs of stress, like cracks around the rim, spokes and hub.
- Every 2 hours of operation
  - Replace the transmission oil.
- Every 10 hours of operation
  - Replace the fork oil.
  - Have the shock oil replaced by a Certified Cobra Mechanic.

### CAUTION:

1. Because of the amount of heat generated by the clutch and engine during extended periods of riding, it is advisable to remove the ignition cover afterward to allow the ignition to cool off. The heat transfers through the cases and can damage the stator as it cools off because of lack of airflow around the stator.
2. If you ever need to weld anything on the bike, disconnect the spark plug cap, unplug the ignition, disconnect the kill switch, scrape the paint bare near the area to be welded and put the ground clamp as close to the area to be welded as possible.

### **WARNING**

Be sure the fuel tank and carburetor have been removed and safely located away from the welding process.

3. The frame is 4130 Chrome Moly and it is important to weld it with the proper rod and heat settings set as light as possible. Cobra recommends replacing the frame with a new one if the old one becomes damaged. Use ER70S6 filler if welding on the frame.
4. If your kick-starter lever does not return properly, first try loosening the six kick/clutch cover screws ½ turn. Hold the kick lever ½ way down while retightening the six screws starting for the center and working out.
5. Inspect CFD slip torque every 10 hours of riding or replace the friction papers and the load spring (Bellville spring) every 20 hours.
6. Check proper clutch engagement before and after each ride. If the clutch is engaging properly DO NOT feel the need to take the clutch apart to; measure the spring stack, clean the stack, replace the springs, etc... Cobra has worked real hard to make a clutch that is low maintenance and so only take it apart if it NEEDS to be maintained.

## Replacing Transmission / Clutch Lubricant

### Tools needed:

- 235 ml (8.0 oz) *Cobra Venom 3 Shoe Clutch Milk* (Part # MCMUGF01).

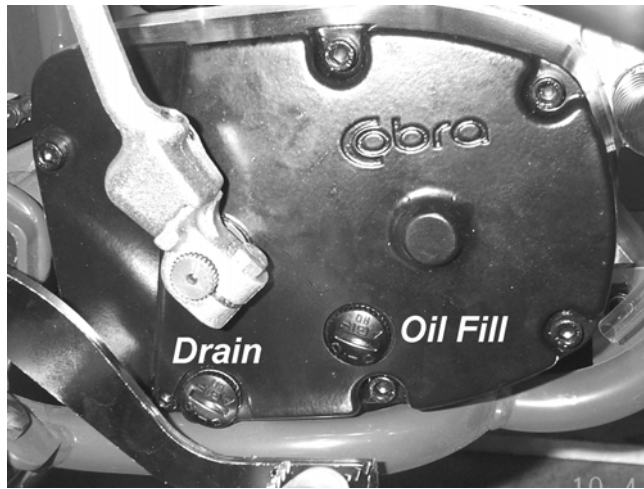
### Procedure:

1. Begin this procedure with a bike that has been ridden more than 5 minutes but less than 10 minutes. It is desired to have the engine warm enough so that the oil is 'runny' but not so hot that there is risk of being burned by the engine or the oil.

### **WARNING**

Hot oil and hot components on the motorcycle may cause burns.

2. Lean bike against something or set on stand with oil drain hole.
3. Remove the oil drain plug located on the right side of the engine, on the clutch cover, near the brake lever (figure 1).



**Figure 1**

4. After it has drained, reinstall the plug, being sure that the gasket is in place.
5. Reapply oil from oil fill plug 235 cc (8.0 oz) *Cobra Venom 3 Shoe Clutch Milk* thru the oil fill plug.

**NOTE:**

Putting additional oil, up to 12 oz (295 cc), can help clutch life. More than 12 oz (295 cc) will degrade engine performance.

**NOTE:**

Lean bike over onto it's left hand side so that the clutch cover is up unless you have a squeeze bottle.

6. Reapply the oil fill plug, hand tight, being sure the gasket is in place.

**CAUTION:**

Cobra has spent considerable time and money developing the proper lubrication to handle the harsh environment of the automatic clutch and transmission of this motorcycle. Cobra's specially developed *Cobra Venom 3 Shoe Clutch Milk* (Part # MCMUGF01) was formulated to provide superior lubrication and cooling capability over extended periods of time and is the recommended lubricant for your Cobra motorcycle.

# Proper Chain Adjustment



Figure 2

1. Make sure that the rear wheel is aligned properly.
2. Push down on the seat, compressing the suspension down to where the chain is tightest. At this point, there should be a minimum of 1" of slack.
3. With the rear wheel elevated, there should be a minimum of 2.5" of slack between the swing arm and the chain.

# Rear Brake Maintenance

## CAUTION:

Too little brake pedal free-play will allow the brake pads to drag causing the pads to wear prematurely and possible engine component failures. Too much free-play will not allow the rider to apply the brakes quickly.

1. Set pedal height/position first, then
2. Set pedal free play.

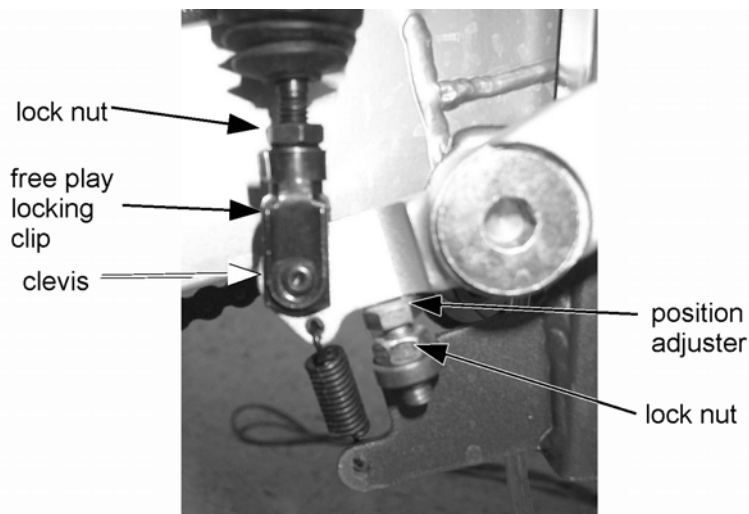
Brake pedal height can be adjusted with the bolt and nut located under the rear of the brake pedal. The free-play is adjusted with the adjustable plunger on the end of the brake pedal.

## CAUTION:

Use only DOT 4 brake fluid

Setting rear brake pedal position (see figure 2b):

1. Loosen the lock nut (10mm wrench).
2. Adjust the brake lever stop (10mm wrench) so that the lever is comfortably reachable in both:
  - a. Standing riding position, and
  - b. Sitting riding position.
3. Tighten the lock nut (10 mm wrench).



**Figure 2b**

**CAUTION:**

Adequate pedal free play is required so that the brake pads do not drag on the rotor. 1" MINIMUM.

**⚠ WARNING**

Make sure that the free play locking clip is installed such that one must push forward, toward the front of the bike, to remove. Otherwise the clip is apt to come undone while riding.

To adjust (see figure 2b):

1. Loosen the lock nut (10mm).
2. Undo the free play locking clip from around the brake adjuster (plunger), with your hand by pushing it forward.
3. Slide the pin of the locking free play locking clip from the brake lever
4. Adjust as needed by rotating the clevis on the end of the adjuster (plunger).

**NOTE:**

Turning the clevis Clockwise will lengthen the adjuster (plunger), removing free play from the system, and turning the clevis Counter-Clockwise will shorten the adjuster (plunger) adding free play to the system.



# Air Filter Cleaning



Figure A1

- Remove the seat (unscrew the knob under the seat & rear fender)
- Squeeze the two tabs together as shown in figure A1 and pull the wire retainer up and out of the air box
- The filter may now be pulled from the airbox
- Clean the airbox of dirt and clean the filter sealing surface of the old sealing grease.

## **CAUTION:**

Pay particular attention to clean any particles from the airbox between the filter location and the carburetor.

## **NOTE:**

Cobra has available a carburetor cover that allows easy cleaning of the airbox.

1. Remove the air boot
2. Install the cover (RCMU0109) over the carburetor inlet
3. Spray out the airbox.

## **⚠ WARNING**

Do not clean the air filter with gasoline or other highly volatile petroleum product. Diesel fuel or kerosene would be preferred but caution should still be taken. Hot soapy water works well.

1. Clean the filter in hot soapy water to remove all dirt particles.
2. Allow it to dry thoroughly.
3. Saturate with filter oil and remove excess.

**NOTE:**

It's very important to oil your filter consistently each time because varied amounts of oil will change your carburetor jetting.

4. Apply grease to the black sealing surface of the filter and reinstall as in figure A2.



Figure A2

5. Squeeze the two finger tabs together on the wire retainer and install into the airbox while aligning the bottom guiding tabs "legs" with the arrows on the filter (figures A3 & A4)

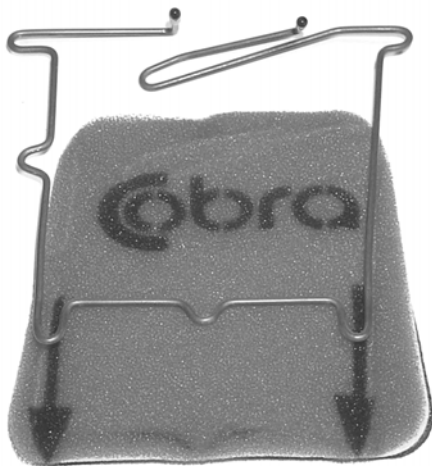


Figure A3



Figure A4

6. Push the wire retainer down until it bottoms

**CAUTION:**

If the side arms do not align with the associated holes it is quite likely that the legs did not make it into the holes. Realign and try again.

7. Press each side arm into their respective holes one at a time with each finger tab.



Figure A5



Figure A6

8. When properly installed, the filter and retainer should look like figure A7, with the filter material extending beyond the perimeter of the wire retainer



Figure A7

**NOTE:**

Make sure you change or clean your filter after each moto. We recommend carrying multiple filters in your toolbox, one for each practice session and moto.

# Fork Oil Replacement

## Tools required

- Two 19 mm wrenches or sockets
- 4 & 5 mm hex key (Allen wrench)
- 25mm wrench or socket
- 5 wt fork oil

## Disassembly procedure

1. Remove the front wheel (19 mm wrench).
2. Remove the brake caliber from the fork leg (4 mm hex key).
3. Loosen the fork caps (25mm socket).
4. Remove the fork legs from the triple clamps (5 mm hex key).
5. One leg at a time
  - a. Remove the fork cap from the leg.
  - b. Separate the fork cap from the damper rod.
  - c. Pull out the fork spring.
  - d. Place upside down over a suitable pan, tray, or container.
  - e. Work the damper rod up and down several times.
  - f. Allow it to drain completely.

## Assembly procedure

1. Fill the fork leg with 4.4 oz (130 ml) 5 wt fork oil.
2. Measure the fork oil level to the top of the fork tube with the leg collapsed, and record for tuning purposes.
3. Install the fork spring.
4. Reconnect the damper rod to the fork cap (12 ft-lb, 16 Nm).

### **CAUTION:**

The damper rod is hollow and will break if the nut is over tightened.

5. Reinstall the for cap into the fork leg (5 ft-lb, 6.7 Nm)
6. Reinstall the fork legs into the clamps (6 ft-lb, 8 Nm).
7. Reinstall the brake caliper.
8. Reinstall the front wheel (25 ft-lb, 34 Nm).

# Frictional Drive (CFD)

The Cobra Frictional Drive (CFD) is essentially a slip clutch that dissipates torque spikes transmitted from the rear wheel to the rest of the drive line and engine. Instead of these torque spikes potentially damaging internal components, the CFD allows the transmission to slip with respect to the engine. For this to occur, the CFD must function properly by 'slipping' between a minimum torque value, and a maximum torque value.

The slip torque of the CFD should be checked every 5 hours of operation.

| Slip Torque | Ft-lb | N-m |
|-------------|-------|-----|
| Minimum     | 50    | 67  |
| Maximum     | 125   | 169 |

With the clutch cover off, you can check the slip torque by 'blocking' the primary gear with a suitably strong device, or Cobra tool EAMU0004, and then rotate the blue CFD nut counter clock-wise with a torque wrench observing the reading when the nut (and shaft) turn.

If you do not have the capability of checking for proper slip torque, you should replace the friction papers and the load spring (Bellville spring) every 10 hours to ensure proper operation.

## **NOTE**

To loosen and tighten the blue CFD nut, use a strong wooden object (large hammer handle) through the spokes of the rear wheel as a brace against the swingarm to stop transmission shaft rotation.

## **CAUTION:**

The blue CFD nut has left hand threads which require clock-wise rotation to loosen.

# Parts

## Parts – Airbox & Inlet System

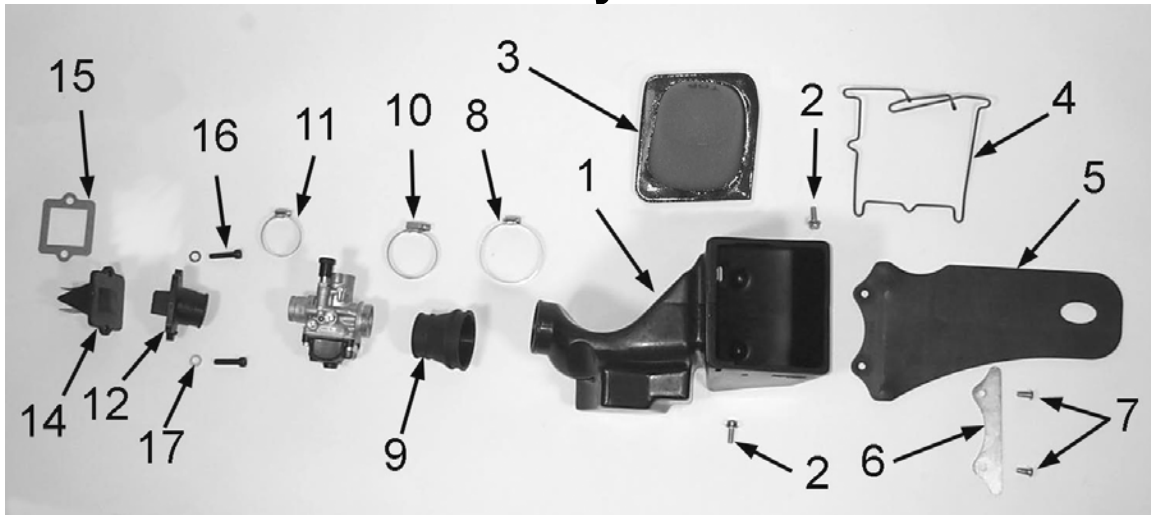


Figure 5

| Coolant System |          |                               |
|----------------|----------|-------------------------------|
| REF #          | PART #   | DESCRIPTION                   |
| 1              | RCKG0501 | AIRBOX                        |
| 2              | HCBF0616 | M6X16 FLANGE HEAD BOLT        |
| 3              | RCKG0512 | AIR FILTER                    |
| 4              | RCKG0503 | FILTER RETAINER               |
| 5              | TCKG0004 | MUDFLAP – AIRBOX              |
| 6              | TCKG0105 | BRACKET – MUDFLAP             |
| 7              | HCBB0612 | M6X12 BUTTON HEAD BOLT        |
| 8              | MCKGHO03 | HOSE CLAMP – AIRBOX TO BOOT   |
| 9              | RCKG0505 | AIR BOOT                      |
| 10             | MCKGHO01 | HOSE CLAMP – BOOT TO CARB     |
| 11             | MCKGHO04 | HOSE CLAMP – CARB TO MANIFOLD |
| 12             | ECKG0203 | INLET MANIFOLD                |
| 14             | ECKG0202 | REED CAGE ASSEMBLY WITH REEDS |
| NOT SHOWN      | ECKG0205 | REED REPLACEMENT KIT          |
| 15             | ZCMU0132 | GASKET – REEDS TO ENGINE      |
| 16             | HCBC0625 | M6X25 SOCKET HEAD CAP SCREW   |
| 17             | HCWF0601 | 6MM FLAT WASHER               |
| NOT SHOWN      | RCCM1301 | VELOCITY STACK                |

## Parts – Bars and Controls

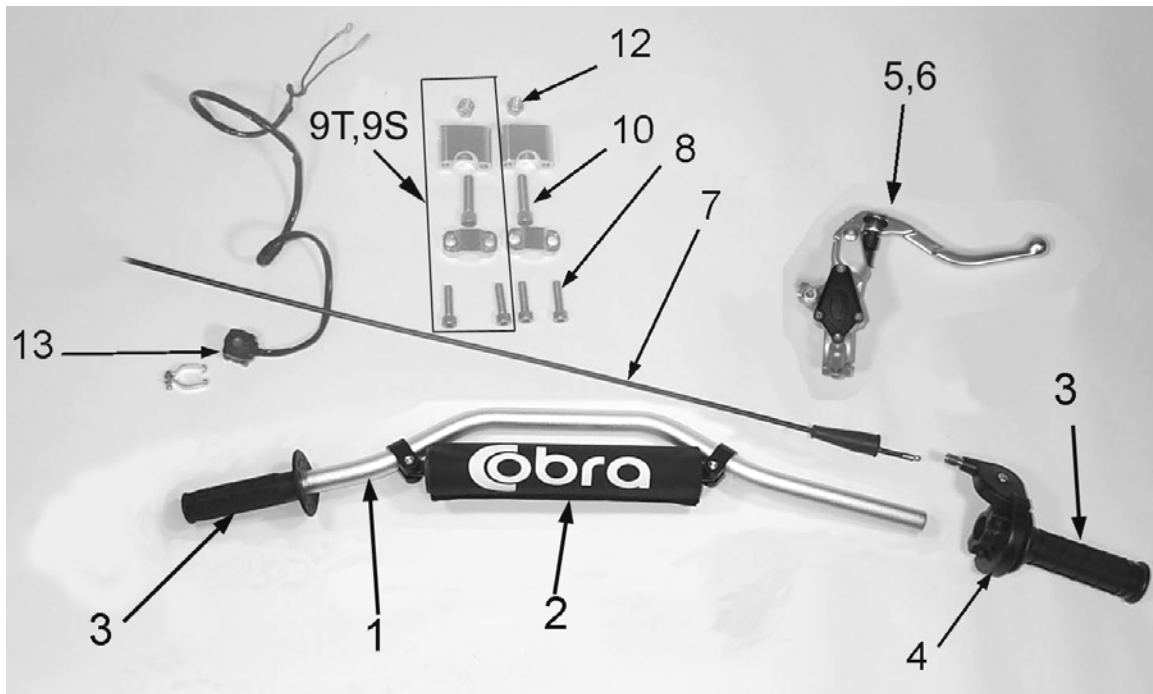
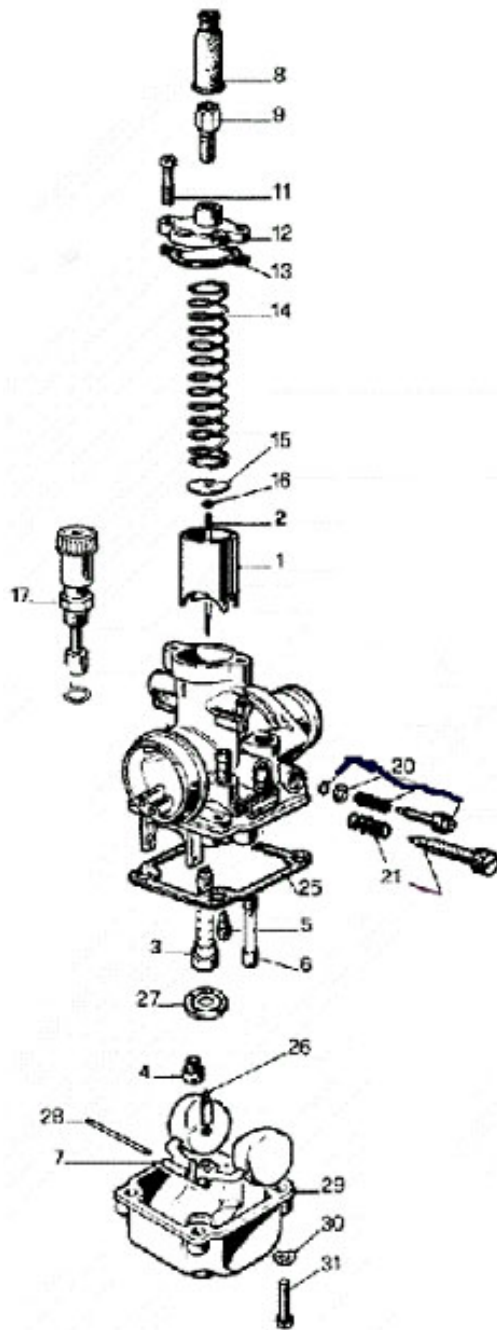


Figure 3

| Bars and Controls |           |                                                 |
|-------------------|-----------|-------------------------------------------------|
| REF #             | PART #    | DESCRIPTION                                     |
| 1                 | TCMU0402  | HANDLEBAR - ALUMINUM                            |
| 2                 | MCMU0001  | OPTIONAL CROSS BAR PAD                          |
| 3                 | TCMU0008  | GRIPS (SET OF TWO)                              |
| 4                 | FCMU0066  | THROTTLE ASSEMBLY                               |
| NOT SHOWN         | FCMU0068  | THROTTLE COVER                                  |
| 5                 | BCKG0023  | ALLOY BRAKE LEVER W/BALL                        |
| 6                 | BCKG0024  | BRAKE PERCH ASSY W/LEVER & BALL                 |
| NOT SHOWN         | BAKG0004  | SHIELDED BRAKE HOSE ASSEMBLY                    |
| 7                 | FCMU0019  | THROTTLE CABLE                                  |
| 8                 | HCBC0806  | SOCKET HEAD CAP SCREW M8 X 30 (4 PER)           |
| 9S                | TKMU0404M | BAR MOUNT KIT, SHORT (2 REQ'D)                  |
| 9T                | TKMU0403M | BAR MOUNT KIT, TALL (2 REQ'D)                   |
| 10                | HCBC1001  | M10X45 SOCKET HEAD CAP SCREW (2 REQ'D PER BIKE) |
| 12                | HCNL1001  | M10 LOCK NUT                                    |
| NOT SHOWN         | HCBH0816  | M8 X 16 HEX HEAD BOLT                           |
| NOT SHOWN         | HCWF0801  | 8MM FLAT WASHER                                 |
| 13                | FCMU0033  | KILL SWITCH ASSEMBLY                            |

# Parts - Carburetor



| Carburetor |          |                              |
|------------|----------|------------------------------|
| REF. #     | PART #   | DESCRIPTION                  |
| 1          | RCMU0305 | CARB SLIDE                   |
| 2          | RCMU0601 | NEEDLE                       |
| 3          | RCMU00   | ATOMIZER 2.62 AU             |
| 4          | RCMU00xx | MAIN JET, xx denotes size    |
| 5          | RCMU00xx | PILOT JET, xx denotes size   |
| 6          |          | CHOKE JET                    |
| 7          | RCMU0301 | FLOAT                        |
| 8          | RCMU0102 | RUBBER CABLE CAP SEAL        |
| 9          | RCMU0003 | CABLE ADJUSTOR               |
| 11         | RCMU0006 | TOP CARB SCREW               |
| 12         | RCMU0106 | CARB TOP                     |
| 13         | ZCMU0007 | TOP CARB GASKET              |
| 14         | RCMU0004 | SLIDE SPRING                 |
| 15         | RCMU0028 | NEEDLE RETAINER PLATE        |
| 16         | RCMU0007 | NEEDLE CLIP                  |
| 17         | RCMU0204 | CHOKE ASS'Y. 2001 CM         |
| 20         | RCMU0009 | FUEL MIXTURE SCREW           |
| 21         | RCMU0011 | IDLE ADJUSTMENT SCREW        |
| 25         | RCMU0103 | FLOAT BOWL GASKET            |
| 26         | RCMU0107 | FLOAT NEEDLE                 |
| 27         | RCMU0012 | DIFFUSER                     |
| 28         | RCMU0016 | FLOAT RETAINER PIN           |
| 29         | RCMU0108 | FLOAT BOWL                   |
| 30         | HCWF0401 | WASHER 4MM FLAT              |
| 31         | RCMU0201 | SCREW - FLOAT BOWL           |
| NOT SHOWN  | RCCM1301 | VELOCITY STACK -05           |
| NOT SHOWN  | MCKGHO01 | CLAMP - CARBURETOR TO FILTER |
| Not Shown  | FCMU0026 | FUEL LINE, 5"                |
| Not Shown  | MCMUCL04 | HOSE CLAMPS - FUEL LINE      |
| Not Shown  | RCMU0018 | CARBURETOR COMPLETE 19 mm    |
| Not Shown  | RCMU0022 | VENT HOSE 2" EACH            |

Figure 4



# Parts – Coolant System

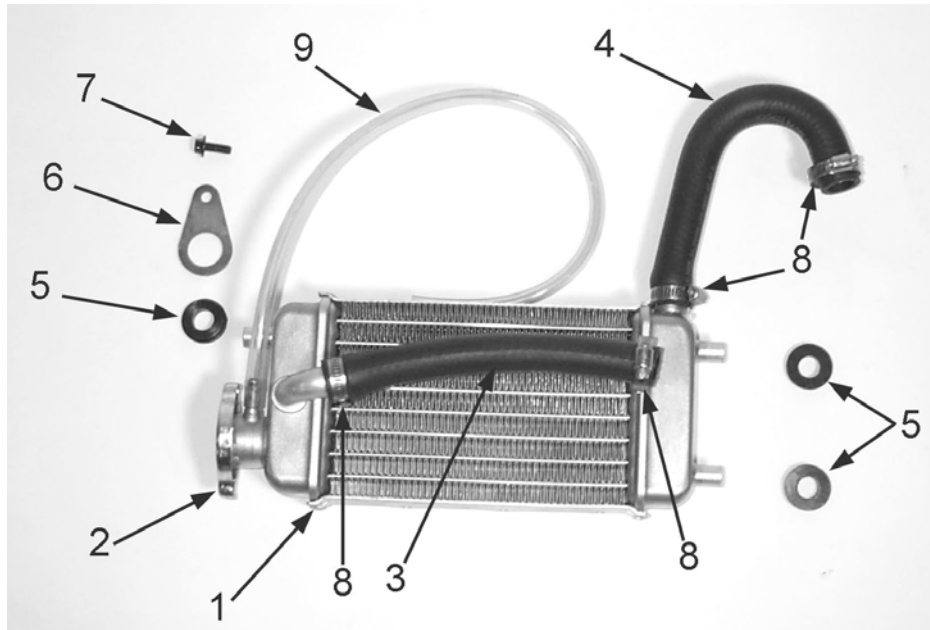


Figure 5

| Coolant System |          |                                      |
|----------------|----------|--------------------------------------|
| REF #          | PART #   | DESCRIPTION                          |
| 1              | FCKG0036 | RADIATOR WITH CAP                    |
| 2              | FCMU0047 | RADIATOR CAP (2 ears or ribbed)      |
| 3              | MCMUHO05 | RADIATOR HOSE, TOP, LEFT             |
| 4              | MCKGHO02 | RADIATOR HOSE, BOTTOM, RIGHT         |
| 5              | MCMUGR03 | MOUNTING GROMMET (3 PER)             |
| 6              | FCMU0006 | RADIATOR MOUNTING BRACKET (TEARDROP) |
| 7              | HCBF0616 | FLANGE HEAD BOLT M6X16               |
| 8              | MCMUCL07 | HOSE CLAMP (4 REQ'D)                 |
| 9              | FCKG0214 | RADIATOR OVERFLOW HOSE, 22"          |
| Not Shown      | MCMUCL05 | HOSE CLAMP FOR OVERFLOW HOSE         |
| Not Shown      | FCKG0001 | LOUVER                               |
| Not Shown      | HCSP0002 | PUSHPIN (2 REQ'D)                    |
| Not Shown      | HCCN0000 | 5 MM CLIP NUT                        |

# Parts – Electrical System

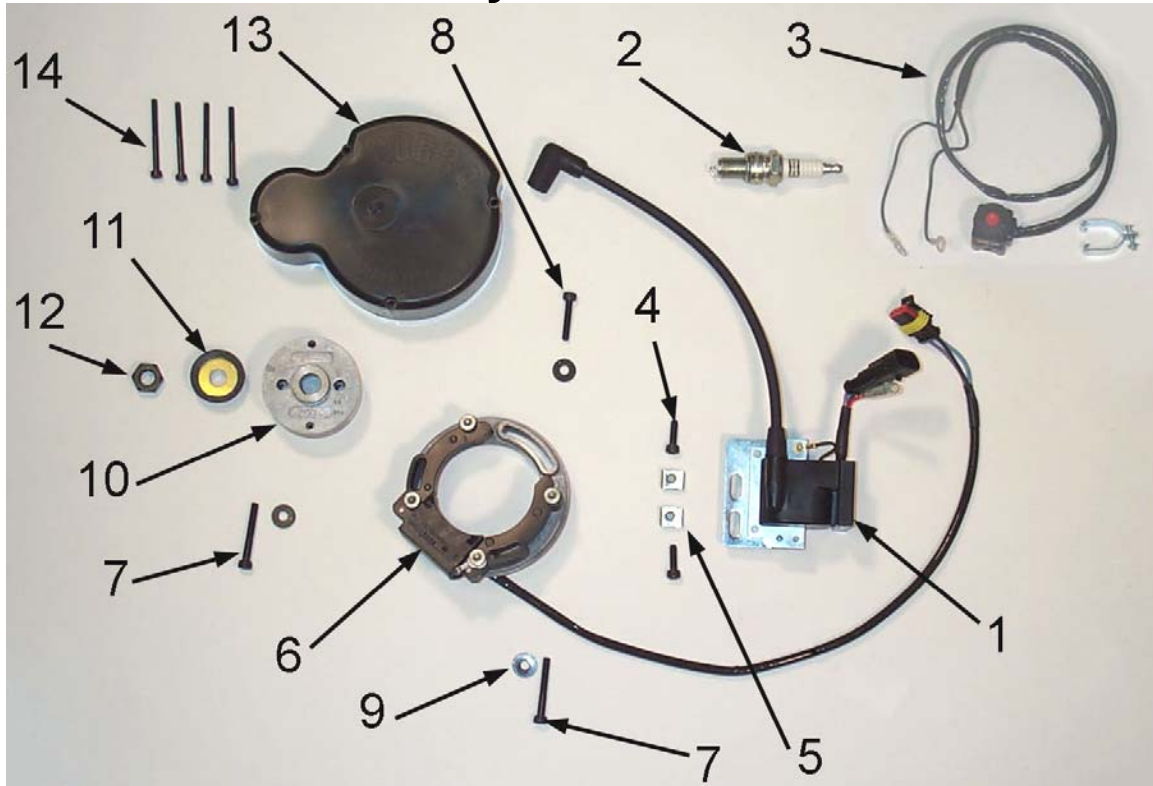


Figure 6

| Electrical System |          |                                          |
|-------------------|----------|------------------------------------------|
| REF #             | PART #   | DESCRIPTION                              |
| 1                 | IAMU0005 | COIL W/SPARK PLUG CAP                    |
| 2                 | ECMU0065 | SPARK PLUG, CHAMPION (8339-1)            |
| 2H                | ECMU0067 | OPTIONAL HOTTER PLUG (8332-1)            |
| 2C                | ECMU0066 | OPTIONAL COLDER PLUG (8904-1)            |
| 3                 | FCMU0033 | KILL SWITCH ASSEMBLY                     |
| 4                 | HCBC0516 | SCREW, M5 X 16 (2 PER)                   |
| 5                 | HCCN0000 | 5MM CLIP NUT (2 PER)                     |
| 6                 | ICMU0018 | STATOR WITH GROMMET                      |
| 7                 | HCBC0535 | 5mm x 35 SOCKET HEAD CAP SCREW (2 REQ'D) |
| 8                 | HCBC0525 | 5mm x 25 SOCKET HEAD CAP SCREW           |
| 9                 | HCWF0504 | WASHER FOR STATOR (3 PER)                |
| 10                | ICMU0006 | ROTOR                                    |
| NOT SHOWN         | ICMU0012 | WOODRUFF KEY                             |
| 11                | ECKG0042 | PULLEY, WATERPUMP CRANK                  |
| 12                | HCNS1001 | NUT 10MM                                 |
| 13                | ECKG0001 | IGNITION COVER                           |
| 14                | HCBC0445 | M4 X 45 SOCKET HEAD CAP SCREW (4 REQ'D)  |
| NOT SHOWN         | ZCKG0101 | GASKET – IGNITION COVER                  |
|                   |          |                                          |

# Parts – Engine – Bottom End and Transmission

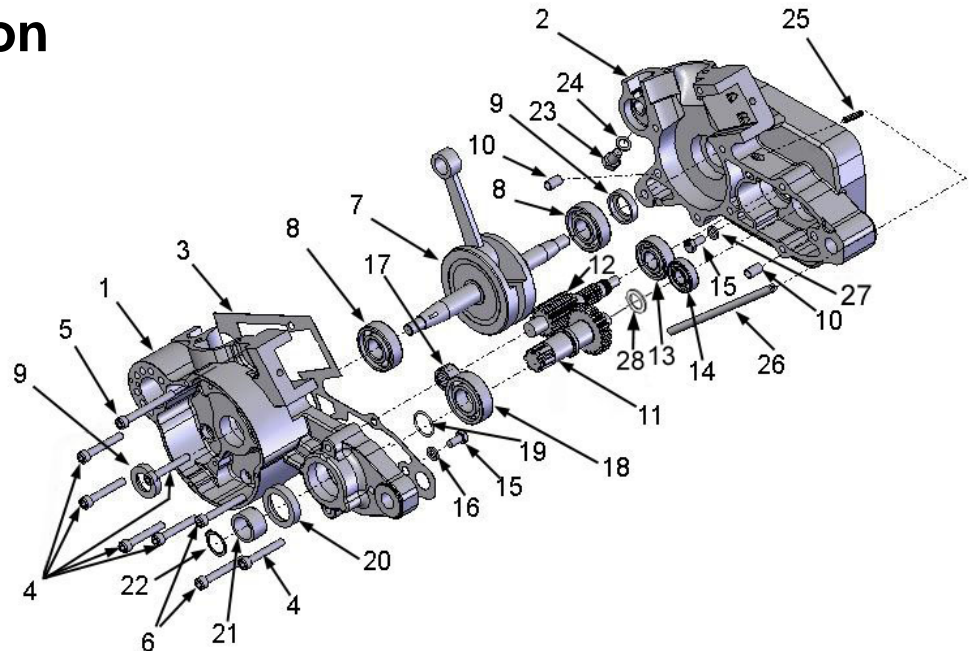
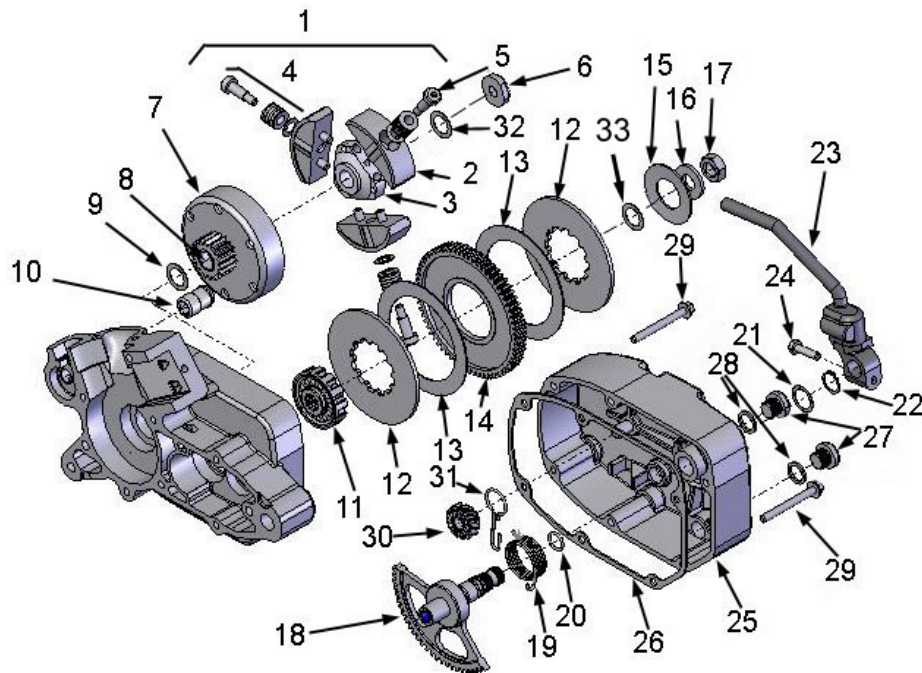


Figure 7A

| Engine Bottom End and Transmission |           |                                                    |
|------------------------------------|-----------|----------------------------------------------------|
| REF #                              | PART #    | DESCRIPTION                                        |
| 1                                  | EKMU0023  | ENGINE CASE SET W/B&S 50 07                        |
| 2                                  | EKMU0023  | ENGINE CASE SET W/B&S 50 07                        |
| 3                                  | ZCMU0601  | GASKET, CRANKCASE CENTER                           |
| 4                                  | HCBC0605  | 6X40MM SOCKET HEAD CAP SCREW (6 REQ'D)             |
| 5                                  | HCBC0608  | 6X55MM SOCKET HEAD CAP SCREW (1 REQ'D)             |
| 6                                  | HCBC0606  | 6X45MM SOCKET HEAD CAP SCREW (2 REQ'D)             |
| 7                                  | ECMU0038  | CRANKSHAFT                                         |
| 8                                  | ECMU0016  | BEARING, CRANKSHAFT                                |
| 9                                  | ECMU0118  | SEAL, CRANKSHAFT                                   |
| 10                                 | ECDC0031  | DOWEL, ENGINE CASE ALIGNEMENT (2 REQ'D)            |
| 11                                 | ECMU0099  | OUTPUT SHAFT, TRANSMISSION WITH GEAR               |
| 12                                 | ECMU0100  | SECONDARY SHAFT, TRANSMISSION WITH GEAR            |
| 13                                 | ECMU0001  | BEARING, TRANSMISSION SECONDARY SHAFT              |
| 14                                 | ECKG0031  | BEARING OUTPUT SHAFT, RIGHT SIDE                   |
| 15                                 | HCBH0612  | M6X12 HEX HEAD SCREW - BEARING RETAINER (2 PLACES) |
| 16                                 | HCWL0601  | 6MM LOCK WASHER                                    |
| 17                                 | ECMU0020L | BEARING, TRANSMISSION PRECISION                    |
| 18                                 | ECKGBR01  | BEARING, TRANSMISSION OUTPUT SHAFT                 |
| 19                                 | ZCDCOR01  | O-RING, SPROCKET SPACER                            |
| 20                                 | ECMU0072  | SEAL, OUTPUT SHAFT                                 |
| 21                                 | ECMU0073  | SPACER, SPROCKET                                   |
| 22                                 | ECKGSR03  | SNAP RING, SPROCKET                                |
| NOT SHOWN                          | PCKG0014  | SPROCKET, 14 T                                     |
| 23                                 | HCBH0805  | M8X12 SCREW – COOLANT DRAIN                        |
| 24                                 | HCWC0000  | COPPER GASKET                                      |
| 25                                 | ECMU0533  | FITTING, CRANKCASE VENT                            |
| 26                                 | RCMU0021  | VENT HOSE, CRANKCASE, 9"                           |
| 27                                 | HCWF0316  | WASHER – FLAT                                      |
| 28                                 | ECMU0156  | SHIM – OUTPUT SHAFT 50'S                           |

# Parts – Engine Clutch and Kicker



| Engine – Clutch and Kick Starter |           |                                              |
|----------------------------------|-----------|----------------------------------------------|
| REF #                            | PART #    | DESCRIPTION                                  |
| 1                                | CAMU0005  | CLUTCH COMPLETE                              |
| 2                                | CAMU0013  | CLUTCH SHOES (SET OF 3) WITH BOLT & WASHERS  |
| 3                                | CCMU0029  | CLUTCH ARBOR                                 |
| 4                                | CAMU0010  | SPRINGS, WASHER & BOLT (SET OF 3)            |
| 5                                | HCBS0004  | CLUTCH BOLT (3 REQ'D)                        |
| 6                                | ECMU0018  | CLUTCH NUT, SPECIAL                          |
| 7                                | ECMU00120 | CLUTCH BASKET WITH NEEDLE BEARING            |
| 8                                | ECMU0119  | CLUTCH BEARING                               |
| 9                                | ECMU0040  | CLUTCH TO HUB SPACER (0.030", 0.76MM)        |
|                                  | ECMU0040T | CLUTCH TO HUB SPACER (THIN – 0.015", 0.38MM) |
| 10                               | ECMU0132  | COOLANT FITTING                              |
| 11                               | ECMU0141* | HUB, CFD*                                    |
| 12                               | ECMU0142* | PLATE, CFD (2 REQ'D)*                        |
| 13                               | ECMU0143  | PAPER, CFD (2 REQ'D)                         |
| 14                               | ECMU0161  | GEAR, CFD                                    |
| 15                               | ECMU0145* | SPRING WASHER, CFD*                          |
| 16                               | HCWF0002* | WASHER FLAT, CFD (13MM)*                     |
| 17                               | HCNS1202  | NUT, CFD (½-20 LEFT HAND THREAD – BLUE)      |
| 18                               | EAMU0001  | KICKSTART GEAR & SHAFT                       |
| 19                               | ECMU0116  | SPRING, KICKSTART                            |
| 20                               | ZCMUB014  | O-RING KICK SHAFT                            |
| 21                               | HCWS1622  | SHIM, KICK SHAFT                             |
| 22                               | ECDC0036  | SNAP RING, KICK SHAFT                        |
| 23                               | ECDC0046  | KICK LEVER W/BOLT                            |
| 24                               | HCBF0620  | 6MM X 20 FLANGE HEAD BOLT                    |
| 25                               | ECMU0115  | CLUTCH COVER                                 |
| 26                               | ZCMU0030  | CLUTCH COVER GASKET                          |
| 27                               | ECMU0037  | OIL FILL PLUG                                |
| 28                               | ZCMU0005  | GASKET, OIL FILL / DRAIN PLUG                |
| 29                               | HCBC0608  | 6MM X 55 SOCKET HEAD CAP SCREW (6 REQ'D)     |
| 30                               | ECMU0207  | KICKSTART GEAR SMALL                         |
| 31                               | ECMUSP01  | KICK START DOG SPRING (PAPER CLIP)           |
| 32                               | HCWS0802  | WASHER – KICK GEAR SPACING                   |
| 33                               | ECMU0134* | SHIM – CFD*                                  |

(\*) denotes an obsolete part. If this part is required, CFD 08 upgrade kit is required EKMU0005

Figure 7B

## Parts – Engine – Ignition and Water Pump

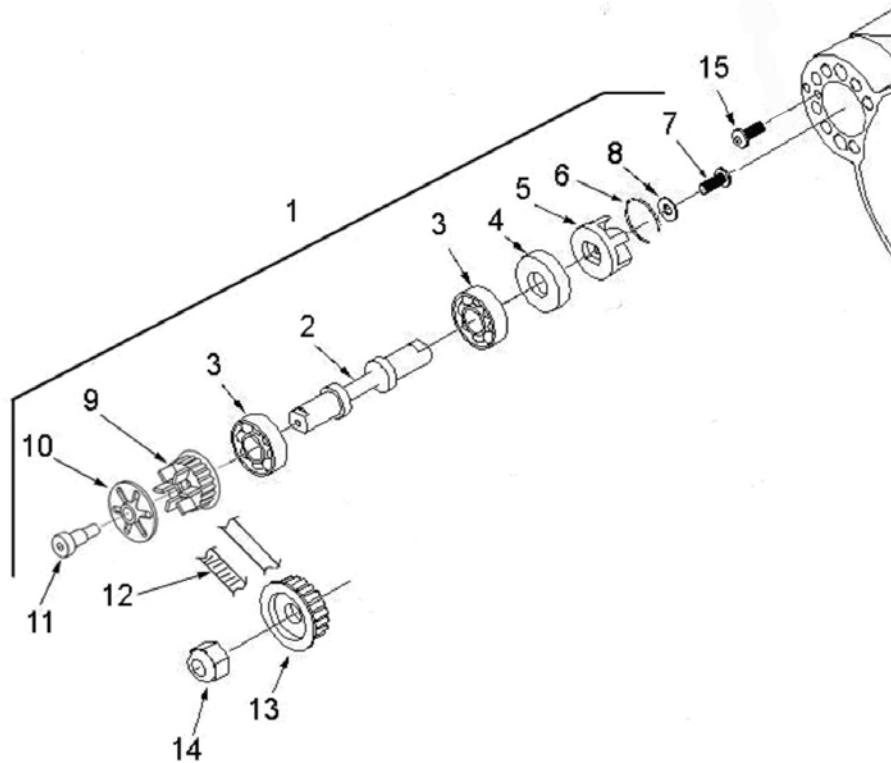


Figure 7C

| Engine – Ignition and Water Pump |          |                                      |
|----------------------------------|----------|--------------------------------------|
| REF #                            | PART #   | DESCRIPTION                          |
| 1                                | EKMU0001 | WATER PUMP KIT                       |
| 2                                | ECKG0142 | SHAFT, WATER PUMP                    |
| 3                                | ECKG0072 | BEARING, WATER PUMP                  |
| 4                                | ECKG0074 | SEAL, WATER PUMP SHAFT               |
| 5                                | ECKG0073 | IMPELLER, WATER PUMP                 |
| 6                                | ECKG0004 | RETAINER, WATER PUMP ASSEMBLY        |
| 7                                | HCBB0003 | 5MM X 12 BUTTON HEAD STAINLESS       |
| 8                                | HCWF0501 | FLAT WASHER                          |
| 9                                | ECKG0175 | WATER PUMP PULLEY, FAN TYPE - DRIVEN |
| 10                               | ECMU0180 | BELT RETAINER                        |
| 11                               | HCBS0003 | SHOULDER BOLT 6MM                    |
| 12                               | ECKG0170 | WATER PUMP BELT                      |
| 13                               | ECKG0042 | WATER PUMP PULLEY, CRANK             |
| 14                               | HCNS1001 | NUT 10MM                             |
| 15                               | HCBC0408 | M4mm x 8 SOCKET HEAD black oxide     |
| 16                               | HCWF0401 | 4MM WASHER                           |

Parts –  
Engine –  
Top End

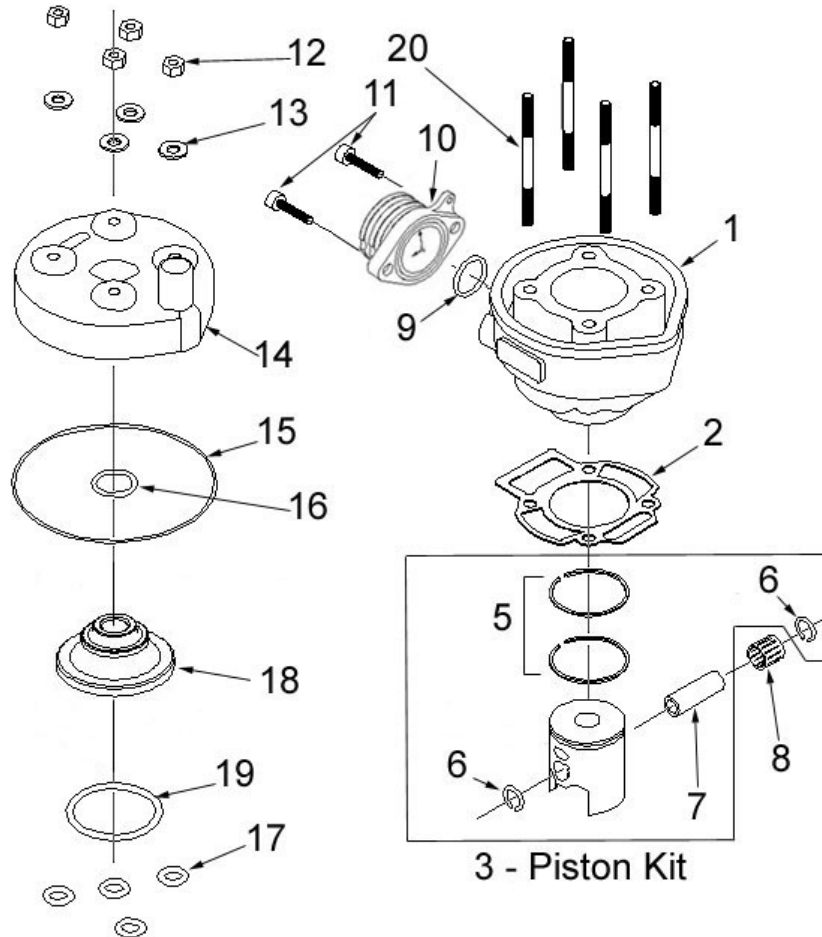
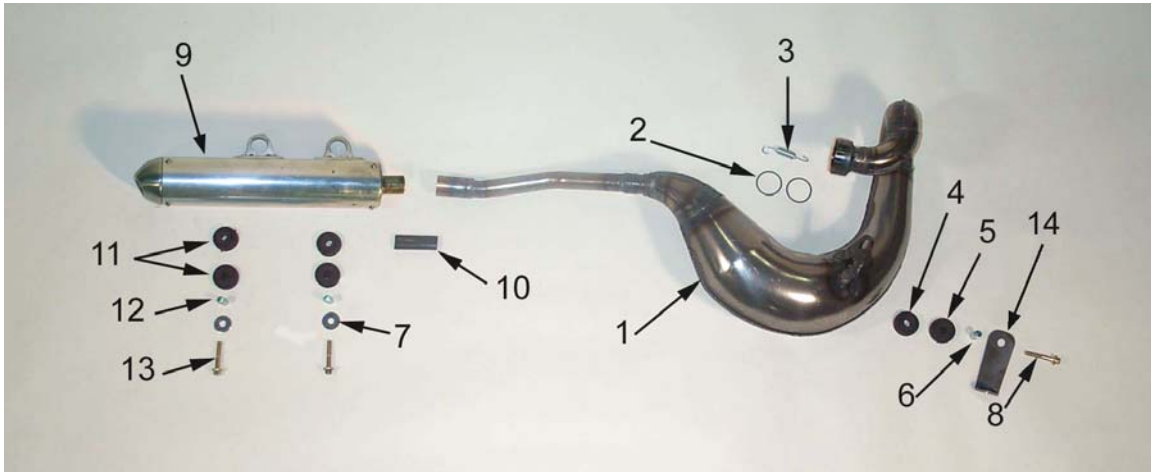


Figure 7D

| Engine – Top End |          |                                                                                                                      |
|------------------|----------|----------------------------------------------------------------------------------------------------------------------|
| REF #            | PART #   | DESCRIPTION                                                                                                          |
| 1                | ECMU0052 | CYLINDER                                                                                                             |
| 2                | ZCKG0501 | BASE GASKET 0.015" (0.4mm thick) For other Base Gaskets refer to <b>Base Gasket Selection</b> section of this manual |
| 3                | ECMU0060 | PISTON KIT                                                                                                           |
| 5                | ECMU0155 | PISTON RINGS (2 PER SET)                                                                                             |
| 6                | ECMUSR00 | SNAP RING FOR PISTON (2 REQ'D)                                                                                       |
| 7                | ECKG0012 | WRIST PIN                                                                                                            |
| 8                | ECMU0077 | BEARING, WRIST PIN                                                                                                   |
| 9                | ZCMUOR07 | O-RING, EXHAUST FLANGE                                                                                               |
| 10               | ECMU0086 | EXHAUST FLANGE                                                                                                       |
| NOT SHOWN        | ZCMOTE11 | O-RINGS – PIPE TO FLANGE (2 REQ'D)                                                                                   |
| 11               | HCBC0612 | M6X12, EXHAUST FLANGE SCREW (2 REQ'D)                                                                                |
| 12               | HCNS0601 | 6mm Nut                                                                                                              |
| 13               | HCWS1401 | HARDENED WASHER                                                                                                      |
| 14               | ECMU0530 | CYLINDER HEAD OUTER                                                                                                  |
| 15               | ZCMUOR02 | O-RING, CYLINDER HEAD LARGE                                                                                          |
| 16               | ZCMUV024 | O-RING CYLINDER HEAD SMALL                                                                                           |
| 17               | ZCMUOR10 | O-RING CYLINDER STUD (4 REQ'D)                                                                                       |
| 18               | ECMU0532 | CYLINDER HEAD, INSERT                                                                                                |
| 19               | ZCMUV032 | O-RING CYLINDER HEAD MEDIUM                                                                                          |
| 20               | ECMU0075 | STUD, CYLINDER 6mm                                                                                                   |

# Parts – Exhaust System



**Figure 8**

| Exhaust System |          |                                                  |
|----------------|----------|--------------------------------------------------|
| REF #          | PART #   | DESCRIPTION                                      |
| 1              | XCCS2009 | EXHAUST PIPE                                     |
| 2              | ZCMOTE11 | HEADER PIPE O-RINGS (2 REQ'D)                    |
| 3              | XCMU0005 | EXHAUST SPRING - SHORT                           |
| 4              | MCMUGR06 | PIPE GROMMET MALE                                |
| 5              | MCMUGR07 | PIPE GROMMET FEMALE                              |
| 6              | MCMUSP02 | PIPE GROMMET SPACER                              |
| 7              | HCWF1478 | PIPE GROMMET WASHER (2 REQ'D)                    |
| NOT SHOWN      | MCMUGR02 | GROMMET KIT                                      |
| 8              | HCBF0635 | M6X35 FLANGE HEAD BOLT                           |
| NOT SHOWN      | HCHA0003 | 6MM CLIP NUT – FOR FRONT PIPE MOUNT              |
| 9              | XCMU0032 | SILENCER                                         |
| NOT SHOWN      | XCMU0026 | SILENCER PACKING KIT                             |
| NOT SHOWN      | HCBB0408 | M4 X 8 SILENCER SCREW                            |
| 10             | XCKG0009 | PIPE / SILENCER SEAL                             |
| 11             | MCMUGR03 | MOUNTING GROMMET (4 REQ'D TOTAL, 2 PER BOLT)     |
| 12             | TCKG0001 | SPACER (2 REQ'D)                                 |
| 13             | HCBF0630 | M6X30 FLANGE HEAD BOLT (2 REQ'D)                 |
| NOT SHOWN      | HCNF0601 | 6MM FLANGE NUT (2 REQ'D) – SILENCER MOUNTING NUT |
| 14             | FCKG0028 | BRACKET – RIGHT SIDE RADIATOR SHROUD             |
| NOT SHOWN      | HCHA0003 | 6MM CLIP NUT FOR PIPE MOUNTING                   |
| NOT SHOWN      | HCCN0000 | 5MM CLIP NUT (ON SHROUD BRACKET)                 |

## Parts – Forks & Triple Clamps

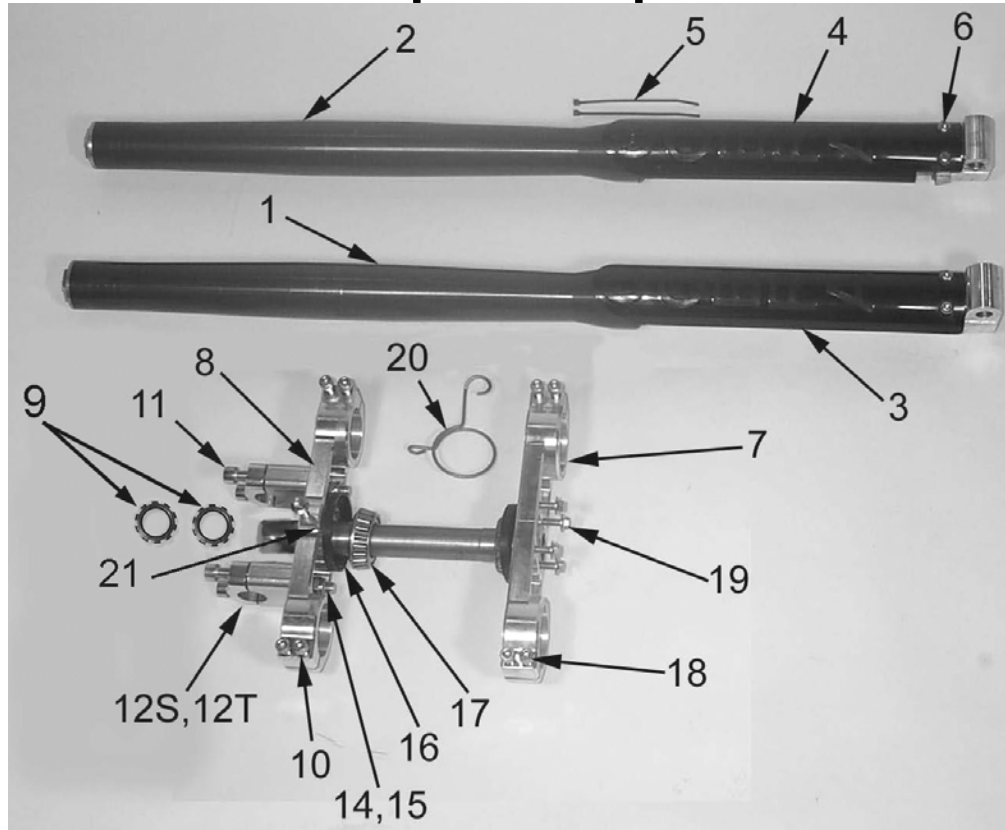


Figure 12

| Front Forks and Triple Clamp |          |                                                      |
|------------------------------|----------|------------------------------------------------------|
| REF #                        | PART #   | DESCRIPTION                                          |
| 1                            | KAKG0020 | FORK COMPLETE, NON-BRAKE SIDE                        |
| 2                            | KAKG0021 | FORK COMPLETE, BRAKE SIDE                            |
| 3                            | KCKG0140 | FORK GUARD SET                                       |
| 4                            | KCKG0140 | FORK GUARD SET                                       |
| 5                            | MCMUZT04 | CABLE TIE (2 REQ'D)                                  |
| 6                            | HCBB0612 | M6X12, BUTTON HEAD SCREW (4 REQ'D)                   |
| 7                            | FAKG0010 | TRIPLE CLAMP BOTTOM ASSY, (1 BEARING AND DUST COVER) |
| 8                            | FCKG0033 | TRIPLE CLAMP UPPER                                   |
| 9                            | HCNJ0102 | STEERING HEAD JAM NUT (2 REQ'D)                      |
| 10                           | HCBC0625 | SOCKET HEAD CS M6X25 (4 REQ'D)                       |
| 11                           | HCBC0806 | CAP SCREW M8X30 (4 REQ'D)                            |
| 12S                          | TCMU0404 | BAR MOUNT KIT, SHORT (2 REQ'D)                       |
| 12T                          | TCMU0403 | BAR MOUNT KIT, TALL (2 REQ'D)                        |
| 14                           | HCBC1001 | M10X45 SOCKET HEAD CAP SCREW (2 REQ'D PER BIKE)      |
| 15                           | HCNL1001 | M10 LOCK NUT                                         |
| NOT SHOWN                    | HCBH0816 | M8 X 16 HEX HEAD BOLT                                |
| NOT SHOWN                    | HCWF0801 | 8MM FLAT WASHER                                      |
| 16                           | FCMU1103 | DUST COVER (2 REQ'D)                                 |
| 17                           | FCMU0004 | STEERING HEAD BEARING (2 REQ'D)                      |
| NOT SHOWN                    | FCMU0011 | STEERING HEAD RACE (2 IN STEERING HEAD)              |
| 18                           | HCBC0625 | SOCKET HEAD CS M6X25 (4 REQ'D)                       |
| 19                           | HCBF0616 | FENDER BOLT, M6X16 FLANGE HEAD (4 REQ'D)             |
| 20                           | FCKG0213 | BRAKE LINE HOLDER                                    |
| 21                           | HCBF0620 | M6X20 FLANGE HEAD BOLT (NUMBER PLATE FASTNR)         |



# Parts – Forks – Leg Assembly

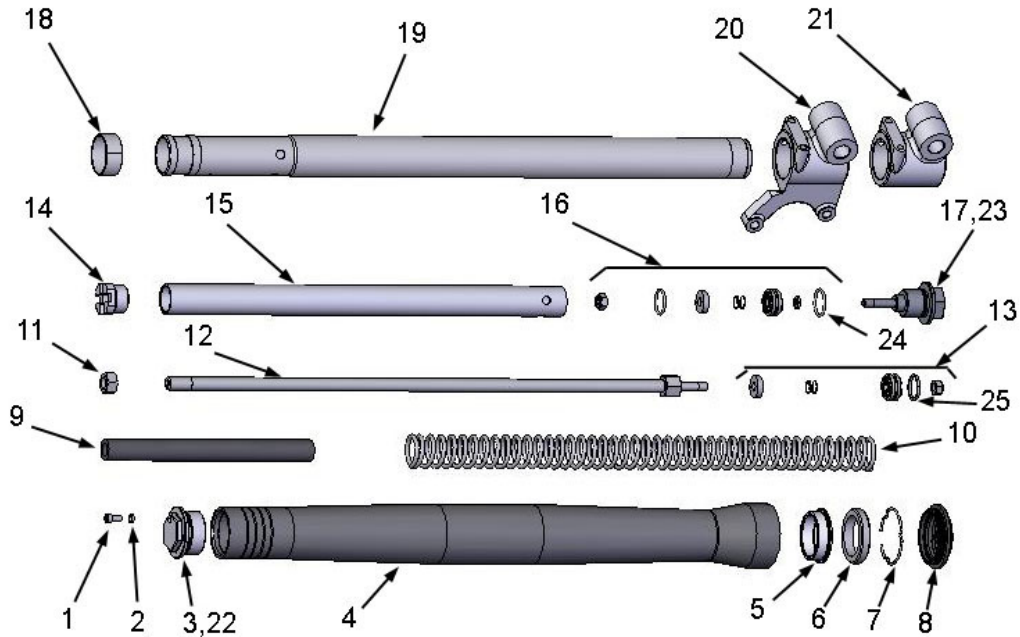


Figure 13

| Fork Leg Assembly |          |                                                              |
|-------------------|----------|--------------------------------------------------------------|
| REF #             | PART #   | DESCRIPTION                                                  |
| 1                 | HCBC0408 | M4 X 8 SHCS (BLEED SCREW)                                    |
| 2                 | ZCKG0001 | GASKET BLEED SCREW                                           |
| 3                 | KCKG0047 | FORK CAP                                                     |
| 4                 | KCKG0121 | FORK LEG OUTER                                               |
| 5                 | KCKG0051 | BUSHING FORK LEG                                             |
| 6                 | KCMU0007 | FORK SEAL                                                    |
| 7                 | KCKG0052 | WIRE FORK ASSY RETAINING                                     |
| 8                 | KCKG0008 | DUST COVER                                                   |
| 9                 | KCKG0048 | RUBBER CUSHION                                               |
| 10                | KCKG1206 | FORK SPRING                                                  |
| 11                | HCNJ0038 | NUT – DAMPER ROD                                             |
| 12                | KAKG0001 | DAMPER ROD ASSEMBLY                                          |
| 13                | KAKG0027 | MID VALVE ASSEMBLY (STANDARD)                                |
|                   | KAKG0026 | MID VALVE ASSEMBLY (LIGHT)                                   |
|                   | KAKG0032 | MID VALVE ASSEMBLY (HEAVY)                                   |
| 14                | KCKG0022 | CARTRIDGE CAP                                                |
| 15                | KCKG0054 | DAMPER TUBE (CARTRIDGE) 5-star                               |
| 16                | KAKG0024 | BASE VALVE ASSEMBLY (STANDARD)                               |
|                   | KAKG0023 | BASE VALVE ASSEMBLY (LIGHT)                                  |
|                   | KAKG0031 | BASE VALVE ASSEMBLY (HEAVY)                                  |
| 17                | KCKG0018 | BOTTOM PLUG                                                  |
| 18                | KCKG0049 | GLIDE RING                                                   |
| 19,20             | KAKG0144 | FORK LEG INNER / BOTTOM BRAKE SIDE (not sold separately)     |
| 19,21             | KAKG0145 | FORK LEG INNER / BOTTOM NON-BRAKE SIDE (not sold separately) |
| 22                | ZCMUOR08 | O-RING GASKET FORKCAP                                        |
| 23                | ZCKGB017 | O-RING BOTTOM PLUG                                           |
| 24                | KCDC0005 | O-RING BASE VALVE                                            |
| 25                | KCDCSL01 | SEAL BAND MID VALVE                                          |

## Parts – Frame I

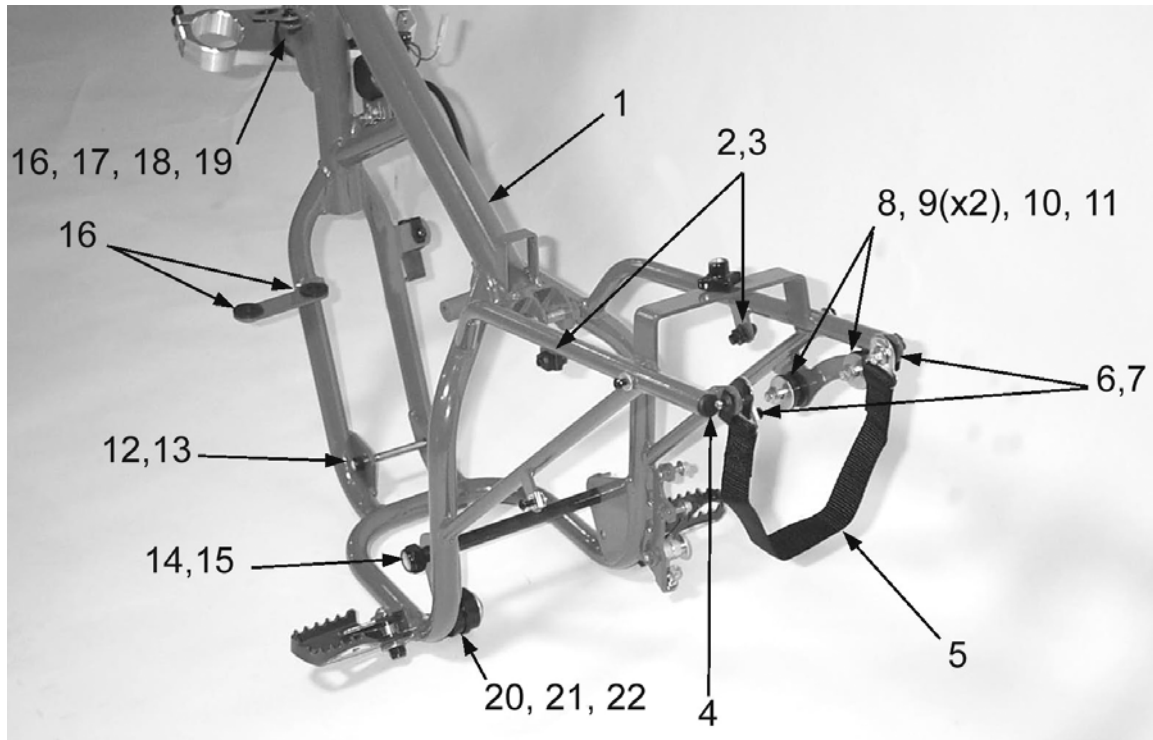


Figure 9

| Frame |          |                                      |
|-------|----------|--------------------------------------|
| REF # | PART #   | DESCRIPTION                          |
| 1     | FAKG2007 | FRAME 2007 CX50 SR                   |
| 2     | HCBF0616 | M6X16 FLANGE HEAD BOLT               |
| 3     | HCHA0003 | 6MM "U" NUT                          |
| 4     | TCKG0007 | PLUG – FRAME END                     |
| 5     | MCMU0003 | STRAP – HANDLE                       |
| 6     | HCBF0620 | M6X20 FLANGE HEAD BOLT               |
| 7     | HCHA0003 | 6MM "U" NUT                          |
| 8     | HCBF0630 | M6X30 FLANGE HEAD BOLT               |
| 9     | MCMUGR03 | GROMMET (2 REQ'D PER BOLT)           |
| 10    | TCKG0001 | ALUMINUM SPACER                      |
| 11    | HCWF1478 | PIPE GROMMET WASHER                  |
| 12    | HCBH0880 | FRONT ENGINE MOUNT BOLT, M8X30 SHCS  |
| 13    | HCNL0801 | 8MM LOCKNUT                          |
| 14    | HCBH1403 | SWINGARM PIVOT BOLT                  |
| 15    | HCNL1402 | SWINGARM LOCK NUT (M14 X1)           |
| 16    | MCMUGR03 | GROMMET                              |
| 17    | HCBF0616 | M6X16 FLANGE HEAD BOLT               |
| 18    | FCMU0006 | RADIATOR MOUNTING BRACKET (TEARDROP) |
| 19    | HCHA0003 | 6MM "U" NUT                          |
| 20    | FCMU0057 | CHAIN ROLLER                         |
| 21    | HCWF1201 | WASHER FLAT, CHAIN ROLLER (2 REQ'D)  |
| 22    | HCCP0002 | COTTERPIN 3/32 X 1 (2 REQ'D)         |

## Parts – Frame II

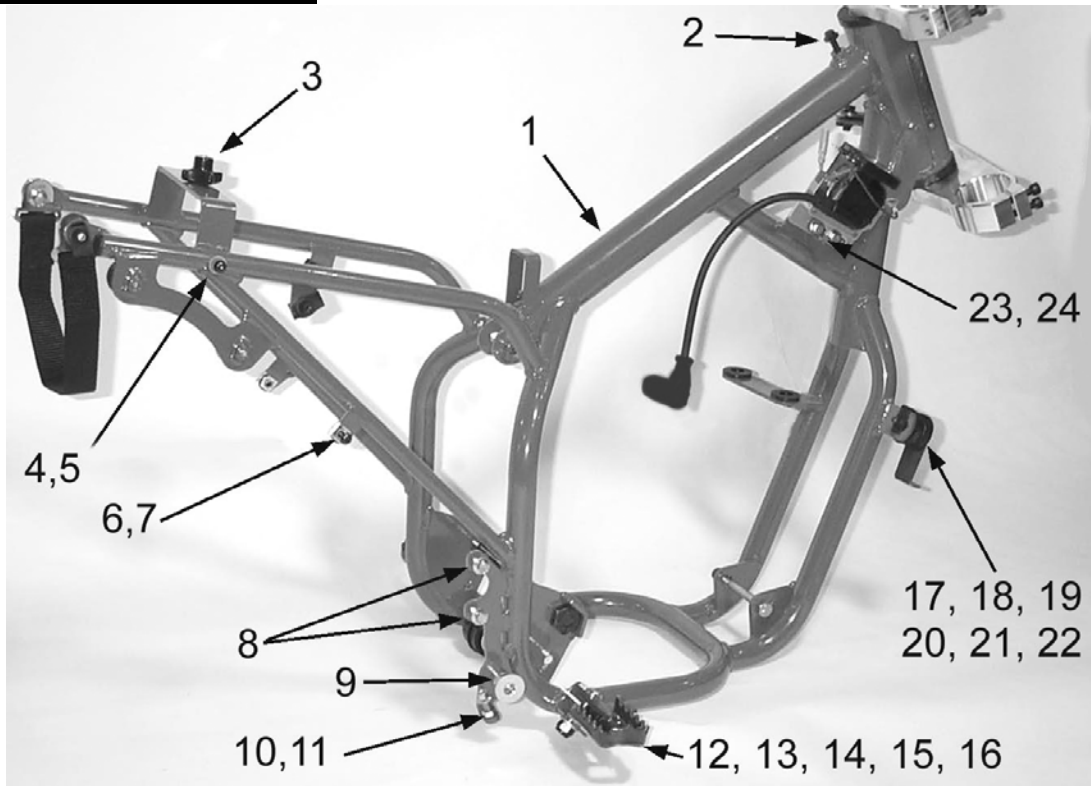


Figure 10

| Frame |          |                                 |
|-------|----------|---------------------------------|
| REF # | PART #   | DESCRIPTION                     |
| 1     | FAKG0011 | FRAME 2005 CX50 SR              |
| 2     | HCBF0616 | M6X16 FLANGE HEAD BOLT          |
| 3     | HCNK0001 | KNOB – SEAT FASTENING           |
| 4     | HCBB0516 | M5X16 BUTTON HEAD BOLT          |
| 5     | HCWP0002 | ALUMINUM WASHER                 |
| 6     | HCBB0516 | M5X16 BUTTON HEAD BOLT          |
| 7     | HCCN0000 | 5 MM CLIPNUT                    |
| 8     | HCBF0620 | M6X20 FLANGE HEAD BOLT          |
| 9     | BCDC0009 | BRAKE PIVOT BOLT                |
| 10    | BCBH0602 | M6 X 20 HEX HEAD BOLT           |
| 11    | HCNS0601 | 6MM NUT                         |
| 12    | TCMU0010 | WIDE FOOTPEGS (PAIR)            |
| 13    | TCMU0106 | FOOTPEG SPRING (SINGLE PIECE)   |
| 14    | HCBH0840 | M8 X 40MM FOOTPEG BOLT          |
| 15    | HCWF0801 | 8MM FLAT WASHER                 |
| 16    | HCNL0801 | 8MM LOCKNUT                     |
| 17    | HCBF0630 | FLANGE HEAD BOLT, M6X30         |
| 18    | MCMUGR06 | PIPE GROMMET MALE               |
| 19    | MCMUGR07 | PIPE GROMMET FEMALE             |
| 20    | MCMUSP02 | PIPE GROMMET SPACER             |
| 21    | FCKG0028 | BRACKET – RIGHT SIDE RAD SHROUD |
| 22    | HCHA0003 | 6MM “U” NUT                     |
| 23    | HCBH0502 | M5X16 HEX HEAD BOLT             |
| 24    | HCCN0000 | 5 MM CLIPNUT                    |
| 25    | HCWF0601 | 6MM FLAT WASHER (ONLY 1 USED)   |

# Parts – Front Brakes

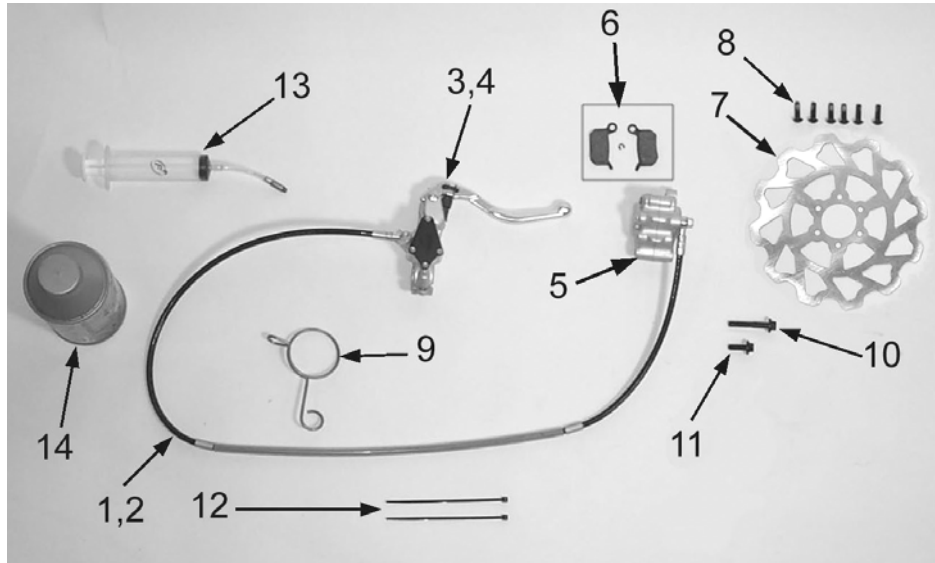


Figure 18

| Front Brakes |          |                                                             |
|--------------|----------|-------------------------------------------------------------|
| REF#         | PART #   | DESCRIPTION                                                 |
| 1            | BAKG0003 | FRONT BRAKE ASSEMBLY                                        |
| 2            | BCKG0030 | HOSE – BRAKE FRONT                                          |
| 3            | BCKG0023 | ALLOY BRAKE LEVER                                           |
| 4            | BCKG0024 | BRAKE PERCH & MASTER CYLINDER ASSY W/ LEVER                 |
| 5            | BCKG0029 | CALIPER – FRONT                                             |
| 6            | BKKG0001 | BRAKE PADS, WITH “E” CLIP                                   |
|              | BCKG0009 | BRAKE PADS ONLY                                             |
| 7            | BCMU0503 | BRAKE ROTOR                                                 |
| 8            | HCBC2512 | M5X12 SHCS WITH THREAD LOC (6 REQ'D)                        |
| 9            | FCKG0213 | GUIDE – FRONT BRAKE LINE                                    |
| 10           | HCBF0635 | M6 X 35 FLANGE HEAD BOLT updated these for new fork bottoms |
| 11           | HCBF0616 | M6 X 16 FLANGE HEAD BOLT                                    |
| 12           | WCMUZT04 | CABLE TIES (2 REQ'D) TO SECURE BRAKE LINE TO FORK GUARD     |
| 13           | BCKG0031 | BLEED KIT (MULTIPLE SYRINGES, FITTINGS & HOSE)              |
| 14           |          | BRAKE FLUID                                                 |
| ACCESSORY    | BCKG0028 | LEVER ADJUSTMENT KIT                                        |
| ACCESSORY    | BCKG0027 | RESERVOIR SEAL KIT                                          |
| ACCESSORY    | BCKG0025 | REPLACEMENT BAR CLAMP AND SCREWS (FOR MASTER CYLINDER)      |
| ACCESSORY    | BCKG0026 | PISTON & REBUILD KIT FOR MASTER CYLINDER                    |
| ACCESSORY    | BCKG0017 | CALIPER ORING & BOLTS (F&R)                                 |
| ACCESSORY    | BCKG0018 | CALIPER PISTON KIT (F&R)                                    |
| ACCESSORY    | BCKG0019 | RETURN SPRING (4 FINGER SPRING)                             |
| ACCESSORY    | ZCMUOR09 | O’RING - BANJO FITTING                                      |

# Parts – Front Wheel

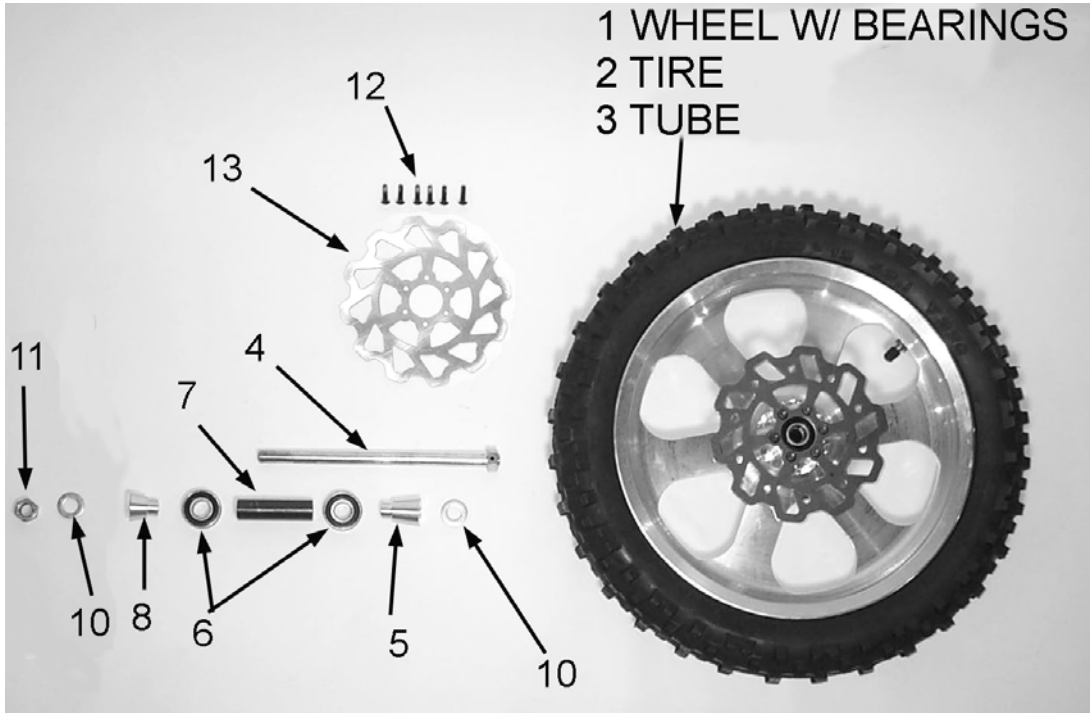
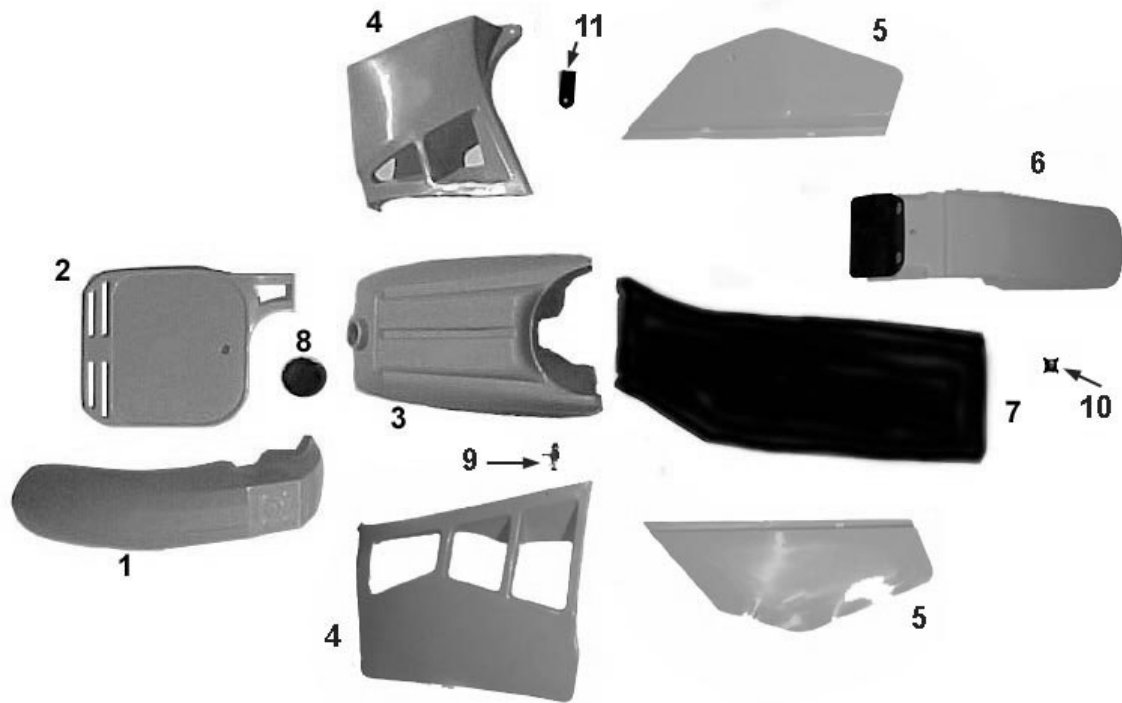


Figure 19

| Front Wheel |          |                                     |
|-------------|----------|-------------------------------------|
| REF #       | PART #   | DESCRIPTION                         |
| 1           | WAKG0022 | FRONT WHEEL W BEARINGS              |
| 2           | WCKG1200 | 12" FRONT TIRE                      |
| 3           | WCKG1201 | 12" FRONT TUBE                      |
| 4           | WCKG0011 | FRONT AXLE                          |
| 5           | WCMU0123 | FRONT WHEEL SPACER, X LARGE         |
| 6           | WCMU0120 | WHEEL BEARING (2 REQD)              |
| 7           | WCMU0032 | WHEEL BEARING SPACER                |
| 8           | WCMU0101 | FRONT WHEEL SPACER, LARGE           |
| 10          | HCWF1202 | FRONT AXLE WASHER                   |
| 11          | HCNS1201 | FRONT AXLE NUT (12MM)               |
| 12          | HCBC2512 | BRAKE ROTOR MOUNTING BOLTS (6 REQD) |
| 13          | BCMU0503 | BRAKE ROTOR                         |

# Parts – Plastic Bodywork & Seat



**Figure 20**

| Plastic and Seat |          |                                             |
|------------------|----------|---------------------------------------------|
| REF #            | PART #   | DESCRIPTION                                 |
| 1                | TCMU0016 | FRONT FENDER                                |
| NOT SHOWN        | HCBF0616 | FRONT FENDER MTG BOLTS (4 REQD)             |
| 2                | TCMU0005 | FRONT NUMBER PLATE                          |
| NOT SHOWN        | HCBF0625 | FRONT NUMBER PLATE MTG BOLT                 |
| 3                | TCMU0006 | FUEL TANK (NO PETCOCK OR CAP)               |
| NOT SHOWN        | HCBF0616 | FUEL TANK MOUNTING BOLT                     |
| 4                | TCMU1203 | RADIATOR SHROUDS (RAD CAP ACCESS)           |
| NOT SHOWN        | HCBB0402 | RAD SHROUD TO TANK BOLT, LONG (1 PER SIDE)  |
| NOT SHOWN        | HCBB0403 | RAD SHROUD TO TANK BOLT, SHORT (1 PER SIDE) |
| NOT SHOWN        | HCBB0516 | M5X16 RAD SHROUD MOUNT BOLT (1 PER SIDE)    |
| NOT SHOWN        | HCWP0002 | SHROUD WASHER (1 PER SIDE)                  |
| 5                | TCMU0113 | SIDE NUMBER PLATE SET                       |
| NOT SHOWN        | HCBB0516 | M5X16 NUMBER PLATE MTG SCREW (2 PER SIDE)   |
| NOT SHOWN        | HCWP0002 | NUMBER PLATE WASHER (UPPER HOLE ONLY)       |
| 6                | TAMU0001 | REAR FENDER ASSEMBLY                        |
| NOT SHOWN        | HCBH0620 | REAR FENDER MTG BOLT (2 REQD)               |
| 7                | TCMU0505 | SEAT                                        |
| 8                | TCMU0103 | FUEL TANK CAP                               |
| 9                | TCMU0000 | FUEL PETCOCK (06 LEVER)                     |
| 10               | HCKN0001 | KNOB – SEAT FASTENING                       |
| 11               | FCKG0028 | BRACKET – RIGHT SIDE RAD SHROUD             |
| NOT SHOWN        | HCCN0000 | 5MM CLIP NUT                                |
| NOT SHOWN        | HCBB0516 | M5X16 RAD SHROUD MOUNT BOLT (1 PER SIDE)    |
| NOT SHOWN        | TCKG2007 | GRAPHIC KIT – CX50 SR 2006                  |
| 12               | MCMU0003 | STRAP HANDLE                                |
| NOT SHOWN        | FCKG0001 | LOUVER                                      |
| NOT SHOWN        | HCCN0000 | 5MM CLIPNUT                                 |
| NOT SHOWN        | HKPP0001 | PUSH PINS – 10 PACK SHROUD FASTENING        |

# Parts – Rear Brake

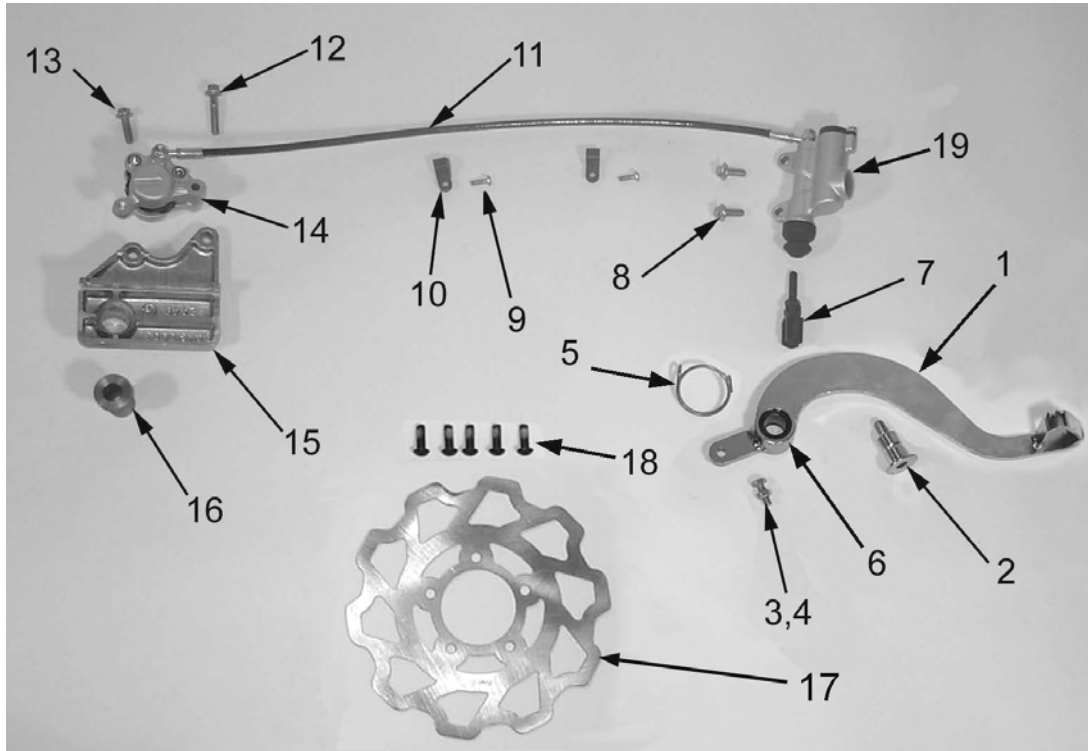


Figure 21

| Rear Brake System |          |                                        |
|-------------------|----------|----------------------------------------|
| REF #             | PART #   | DESCRIPTION                            |
|                   | BAKG0002 | <b>BRAKE COMPLETE</b>                  |
| 1                 | BCMU0012 | BRAKE PEDAL                            |
| 2                 | BCDC0009 | BRAKE PIVOT BOLT                       |
| 3                 | HCBH0620 | M6X20 HEX HEAD BOLT                    |
| 4                 | HCNS0601 | 6 MM NUT                               |
| 5                 | BCMUSP02 | BRAKE RETURN SPRING                    |
| 6                 | BCMU0501 | SEAL – BRAKE PEDAL (2 REQ'D)           |
| 7                 | BCDC0004 | PUSH ROD, REAR BRAKE                   |
| 8                 | HCBF0620 | M6X20 FLANGE HEAD BOLT (2 REQ'D)       |
| 9                 | HCPP0832 | BRAKE HOSE CLAMP FASTENER (2 REQ'D)    |
| 10                | HCCC0000 | BRAKE HOSE CLAMP (2 REQ'D)             |
| 11                | BCKG0010 | REPLACEMENT BRAKE HOSE                 |
| 12                | HCBF0635 | M6X35 FLANGE HEAD BOLT                 |
| 13                | HCBF0620 | M6X20 FLANGE HEAD BOLT                 |
| 14                | BCKG0013 | CALIPER – REAR BRAKE                   |
| ACCESSORY         | BKKG0001 | BRAKE PADS WITH “E” CLIP               |
| 15                | BCKG0103 | BRAKE CARRIER WITH PAD                 |
| 16                | BCKG0006 | WHEEL SPACER - FLOATING CARRIER        |
| 17                | BCMU0502 | BRAKE ROTOR                            |
| 18                | HCBC1616 | M6X16 SOCKET HEAD CAP SCREWS (5 REQ'D) |
| 19                | BCKG0012 | <b>MASTER CYLINDER - REAR</b>          |
| ACCESSORY         | BCKG0014 | FITTING KIT                            |
| ACCESSORY         | BCKG0015 | MASTER CYLINDER PISTON / SEAL KIT      |
| ACCESSORY         | BCKG0016 | RESERVOIR SEAL KIT                     |
| ACCESSORY         | BCKG0017 | CALIPER BOLT / O-RING KIT              |
| ACCESSORY         | BCKG0018 | CALIPER PISTON / SEAL KIT              |
| ACCESSORY         | BCKG0019 | PAD RETURN SPRING (4 LEG SPRING)       |
| ACCESSORY         | ZCMUOR09 | O’RING - BANJO FITTING                 |

# Parts – Rear Wheel

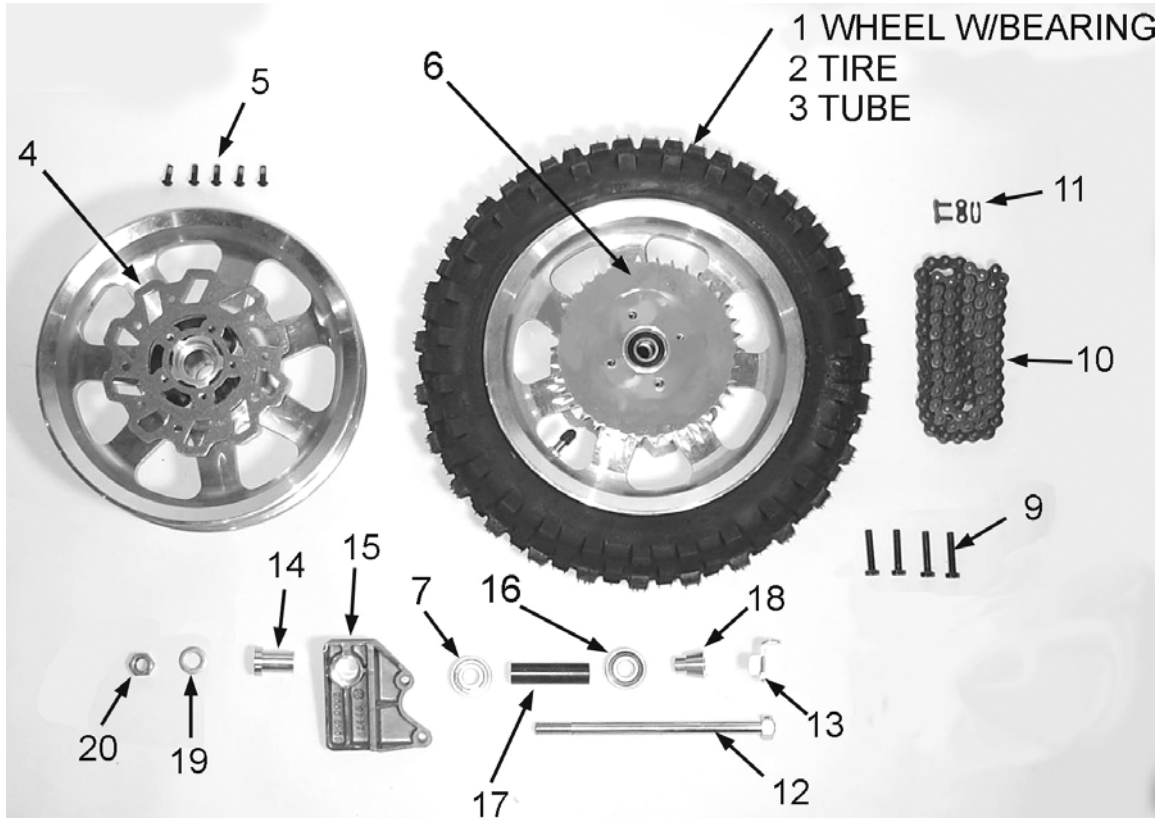


Figure 22

| Rear Wheel |           |                                        |
|------------|-----------|----------------------------------------|
| REF #      | PART #    | DESCRIPTION                            |
| 1          | WAKG2007R | REAR WHEEL W/BEARINGS                  |
| 2          | WCMU1275  | REAR TIRE, VEE RUBBER 2.75X10          |
| 3          | WCMUTU10  | TUBE, 10"                              |
| 4          | BCMU0502  | BRAKE ROTOR                            |
| 5          | HCBC1616  | M6X16 SOCKET HEAD CAP SCREWS (5 REQ'D) |
| 6          | PCMU0138  | 38T STEEL REAR SPROCKET (NO DAMPERS)   |
| 7          | WCMU0020  | WHEEL BEARING BRAKE SIDE               |
| 9          | HCBH0702  | M7X30 HEX HEAD BOLT                    |
| 10         | PCMU0100  | CHAIN 420 X 100                        |
| 11         | PCMU0001  | MASTER LINK 420                        |
| 12         | WCMU0016  | REAR AXLE                              |
| 13         | HCPA0002  | AXLE HEAD FIXING PLATE                 |
| 14         | BCKG0006  | WHEEL SPACER - FLOATING CARRIER        |
| 15         | BCKG0103  | BRAKE CARRIER                          |
| NOT SHOWN  | BCKG0104  | BRAKE CARRIER PAD                      |
| 16         | WCMU0120  | WHEEL BEARING SPROCKET SIDE            |
| 17         | WCMU0033  | WHEEL BEARING SPACER                   |
| 18         | WCMU0101  | WHEEL SPACER                           |
| 19         | HCWF1202  | AXLE WASHER                            |
| 20         | HCNL1201  | AXLE NUT 12MM                          |



## Parts – Shock

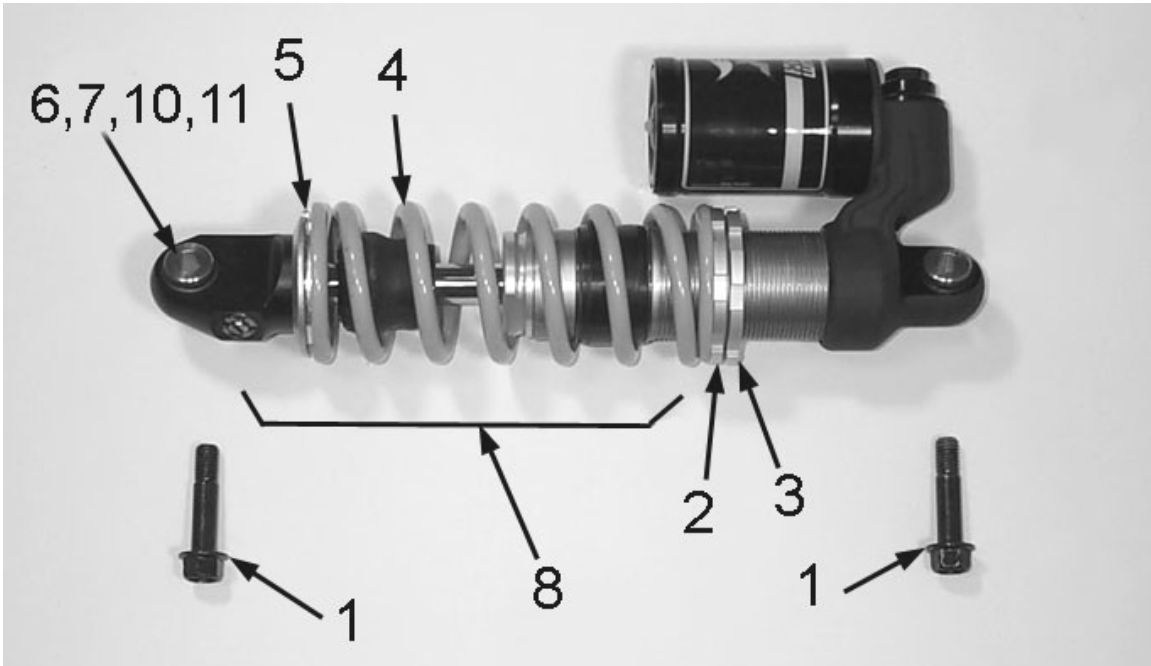


Figure 23

| Shock |          |                                   |
|-------|----------|-----------------------------------|
| REF # | PART #   | DESCRIPTION                       |
| 1     | HCBF1040 | M10 X 40 HEX HEAD BOLT            |
| 2     | SCKGFX04 | PRELOAD RING BOTTOM               |
| 3     | SCKGFX05 | PRELOAD RING TOP (LOCK RING)      |
| 4     | SCKGFX37 | SHOCK SPRING 3.7 KG/MM (STANDARD) |
|       | SCKGFX35 | SHOCK SPRING 3.5 KG/MM (LIGHT)    |
|       | SCKGFX39 | SHOCK SPRING 3.9 KG/MM (HEAVY)    |
| 5     | SCKGFX03 | SPRING RETAINER BOTTOM            |
| 6     | SCKGFX01 | COLLAR – SHOCK END MOUNT          |
| 7     | ZCMU0114 | O-RING – SHOCK END MOUNT          |
| 8     | SAKG2006 | REAR SHOCK (FOX)                  |
| 10    | SCKGFX06 | BEARING – SPHERICAL SHOCK MOUNT   |
| 11    | SCKGFX07 | RETAINING RING SHOCK END BEARING  |

# Parts – Swingarm Assembly

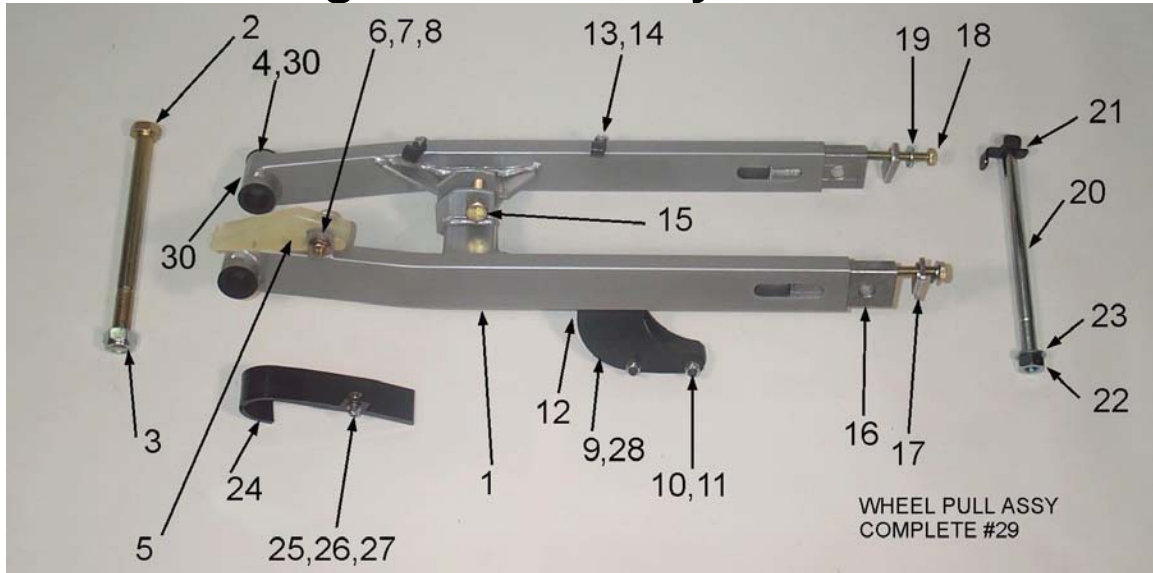


Figure 24

| Swingarm |          |                                      |
|----------|----------|--------------------------------------|
| REF #    | PART #   | DESCRIPTION                          |
|          | GAKG2004 | SWINGARM ASSEMBLY COMPLETE           |
| 1        | GAKG0002 | SWINGARM PAINTED                     |
| 2        | HCBF1403 | SWINGARM PIVOT BOLT                  |
| 3        | HCNL1402 | SWINGARM LOCK NUT (M14 X1)           |
| 4        | GCMU0001 | SWINGARM BUSHING (4 PER)             |
| 5        | GCMU0005 | TOP SWINGARM GUARD (CHAIN SLIDER)    |
| 6        | HCBB0803 | M8X40 BUTTON HEAD BOLT               |
| 7        | HCWF5601 | FLAT WASHER                          |
| 8        | HCNL0801 | 8MM LOCK NUT                         |
| 9        | PAKG0002 | CHAIN GUIDE ASSEMBLY COMPLETE        |
| 10       | HCBFT640 | 6X40 FLAT HEAD SCREW (2 REQ'D)       |
| 11       | HCNL0601 | 6MM LOCKNUT (2 REQ'D)                |
| 12       | HCBF0620 | M6 X 20 FLANGE HEAD BOLT (2 PER)     |
| 13       | HCCC0000 | BRAKE HOSE CLAMP (2 PER)             |
| 14       | HCPP0832 | BRAKE HOSE CLAMP FASTNER (2 PER)     |
| 15       | HCBF1040 | M10 X 40 LOWER SHOCK MOUNT BOLT      |
| 16       | FCMU0203 | WHEEL PULL                           |
| 17       | FKMU0005 | WHEEL PULL ENDCAP WITH WASHER        |
| 18       | HCBH0810 | WHEEL PULL BOLT M8X65                |
| 19       | HCWF801  | WHEEL PULL WASHER (M8)               |
| 20       | WCMU0016 | REAR AXLE                            |
| 21       | HCPA0002 | AXLE HEAD FIXING PLATE               |
| 22       | HCNL1201 | AXLE NUT, 12 MM                      |
| 23       | HCWF1202 | AXLE WASHER                          |
| 24       | GCMU0017 | OPTIONAL TOP CHAIN SLIDE             |
| 25       | HCFH0516 | FLAT HEAD SCREW                      |
| 26       | HCWF0501 | WASHER                               |
| 27       | HCNL0501 | LOCK NUT                             |
| 28       | PCKG0004 | BOTTOM CHAIN SLIDER                  |
| 29       | FAMU0005 | WHEEL PULL ASSEMBLY COMPLETE         |
| 30       | GCKG0008 | SWINGARM PIVOT TUBE SPACER (2 REQ'D) |

# Service

Trained technicians with precision gauging and proper assembly fixtures carefully assemble all Cobra engines to specific tolerances. If you feel you have the skills, and the appropriate tools, to perform the following service tasks please follow the instructions closely. The part numbers are listed throughout to help you when ordering parts from your local Cobra dealer.

If you don't feel comfortable with the service work, log on to [www.cobramotorcycle.com](http://www.cobramotorcycle.com) to find a Cobra dealer or Call 517 437 9100.

## Engine Service

One method for determining whether the top end of your engine needs rebuilt is to perform a WOT (Wide Open Throttle) kicking compression test. Before performing the procedure please read the caution notes below.

### CAUTION:

- There appears to be a wide range of variability in reading compression gauges across the country.
- The head volume of this Cobra Motorcycle is very small and so requires many kicks ~20 before you establish the most accurate reading possible.
- Because of the geometry of the spark plug used in this Cobra Motorcycle, the adapter used with your compression tester must have a similar volume protruding into the combustion chamber to establish an accurate value.
- Length of hose on the compression tester will affect the reading. The shorter the hose length the more accurate your reading will be.

Because of these difficulties in measuring an *absolute* compression value, a useful *relative* value can be achieved by testing your bike's compression with your own particular gauge after a new top end or when the bike is new so that you know what your particular gauge reads on a 'fresh' engine. When it has dropped to 90% of its original value the engine will be down on power and would benefit from a rebuild. When it's dropped to 80% it really needs rebuilt! Using the table below will help you determine monitor the condition of your top end.

|             | Engine is Fresh<br>Measured Value | Engine Down on Power<br>Measured Value * 0.9 | Engine NEEDS Rebuilt<br>Measured Value * 0.8 |
|-------------|-----------------------------------|----------------------------------------------|----------------------------------------------|
| Example     | 110 psi                           | 110 psi * 0.9 = 99 psi                       | 110 psi * 0.8 = 88 psi                       |
| Your Values |                                   |                                              |                                              |

## Procedure for Compression Testing

1. Shut off the fuel petcock.
2. Install the compression gauge into the spark plug hole.
3. Hold the throttle to wide open, and kick repeatedly (approximately 20 times) or until the gauge reading does not increase in value with each kick.

## Base Gasket Selection

### Tools required

- 17mm wrench
- 1mm flexible solder material
- measurement calipers

When rebuilding the 'top end' of your Cobra motorcycle, care must be taken to ensure the proper squish clearance. Squish clearance is defined as the minimum distance between cylinder head and piston at TDC, and there are negative effects of either having too much or too little clearance. Since parts like the crank, connecting rod, cylinder head, piston, and crankcases all have varying tolerances, Cobra offers several different base gasket thickness' to ensure that you can always set the squish clearance of your engine to factory specifications.

For base gasket replacement use the code (see figure 21 for location) along with the table on the following page reorder the correct thickness gasket.

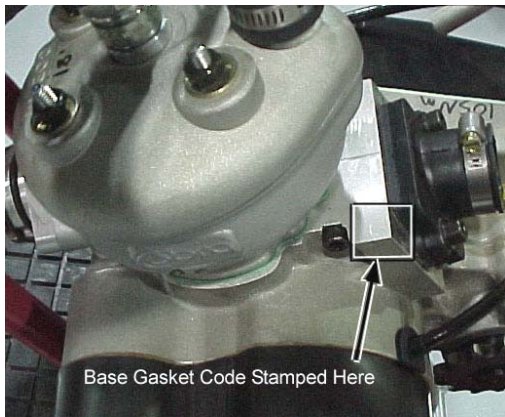


Figure 21

| Code | Supplied Base Gasket Thickness |       | Cobra #  |
|------|--------------------------------|-------|----------|
| #    | mm                             | inch  | Part #   |
| 2    | 0.2                            | 0.008 | ZCMU0702 |
|      | 0.25                           | 0.010 | ZCMU0011 |
| 3    | 0.3                            | 0.012 | ZCMU0703 |
| 4    | 0.4                            | 0.015 | ZCKG0501 |
| 5    | 0.5                            | 0.020 | ZCMU0705 |
| 6    | 0.6                            | 0.024 | ZCMU0706 |
| 7    | 0.7                            | 0.028 | ZCMU0707 |
| 8    | 0.8                            | 0.031 | ZCMU0708 |

|   |     |       |          |
|---|-----|-------|----------|
| 9 | 0.9 | 0.035 | ZCMU0015 |
| 1 | 1.0 | 0.039 | ZCMU0016 |

**NOTE**

Tolerances will affect the actual gasket thicknesses.

If during the course of the maintenance more parts than the base gasket are changed, the squish clearance should be measured, and possibly a different base gasket will be required.

The easiest way to measure squish clearance is with 1mm to 1.5mm thick flexible solder wire (available through most popular electronic stores). The process is as follows:

- Assemble the top end of the engine with either; 1) the crankcase stamp recommended base gasket or, 2) if assembling with a new set of cases assemble with a 0.4mm (0.015”) base gasket, and torque the head nuts to the proper torque specifications leaving off the spark plug and ignition cover (piston rings can be left off to ease assembly).
- Carefully insert the solder wire through the spark plug hole, into the cylinder far enough such that the tip of the wire touches the left or right side cylinder wall (not the front or back as the piston will rock more and give incorrect measurement).
- Hold the wire at this position and rotate the crankshaft, by the flywheel nut (or kick lever) three revolutions to ‘smush’ the solder wire.

**CAUTION:**

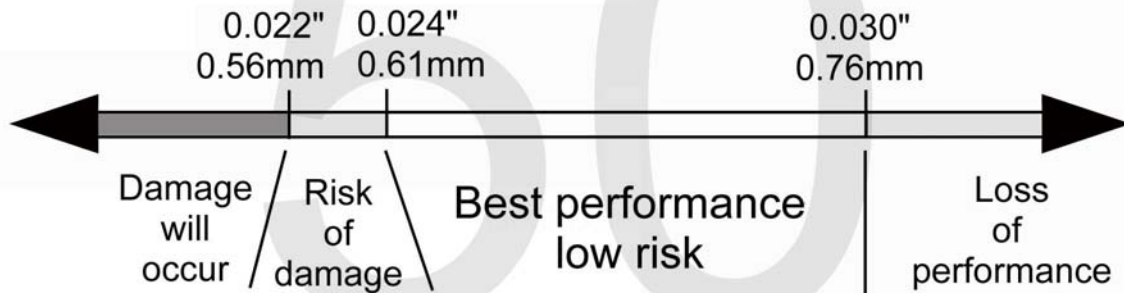
If you rotate the flywheel nut in a counterclockwise direction there is a risk of loosening the nut.

- Pull out the wire and measure the solder thickness at the thinnest location near its tip accurately with the thin tips of calipers.
- Adjust base gasket thickness as necessary to get the desired value.

Upon completion, your final assembly squish clearance should agree with the chart below

## Measured Squish Clearance (minimum)

(These numbers only apply when measured as described above)



## Engine Removal

To service the bottom end and transmission, the engine must be removed from the frame.

### Tools required

- 10, 11, 13, 22 mm wrench
- 8, 10, 14, 17 & 19 mm sockets
- 3, 4 & 5 mm hex key (Allen wrench)
- 7 mm nut driver, flat or Phillip, screwdriver for hose clamps
- Spring remover
- Flywheel / clutch puller (#MCMUTL68)
- Clutch nut removal tool (Call local dealer for details).

### Procedure

1. Remove the seat.
2. Turn of the fuel at the petcock and disconnect the fuel line.
3. Remove the tank (8 mm socket).
4. Remove the carburetor from the inlet (flat head or Phillips head screwdriver, 7 mm nut driver).
5. Remove the silencer & pipe (spring remover, 8mm socket).
6. Locate a suitable container for the engine coolant and disconnect the coolant lines connected to the engine (8 mm socket).

### NOTE:

If the coolant looks to be free of contaminates it may be reused.

7. Remove the master link from the chain.
8. Remove front engine mount bolt (13 mm socket, 6 mm hex key).
9. Remove the swingarm bolt (22mm socket).

### NOTE:

Only drive the swingarm bolt far enough to clear the engine, leave it holding the one side of the swingarm to the frame

10. Remove the engine from the right side of the frame.

**NOTE:**

If you are merely performing a top end service skip ahead to *Top End Disassembly Procedure*.

## Complete Engine Disassembly Procedure

1. Remove the magneto cover (4mm hex key)
2. Remove the bolt from the water pump shaft (4mm) and slide off the belt cover and the water pump belt
3. Using a flywheel holding tool and 14 mm socket remove the nut that secures the flywheel.
4. Using the Cobra flywheel / clutch puller (#MCMUTL68), remove the flywheel from the crankshaft.
5. Remove the stator (4mm hex key).
6. Remove the left hand thread blue nut holding the CFD to the transmission input shaft (19 mm socket).
7. Remove the special nut / starter gear that holds on the clutch (special tool available, contact your local dealer).
8. With the Cobra flywheel / clutch puller (#MCMUTL68), remove the clutch from the crankshaft (details in Clutch Service portion of this manual).

## Top End Disassembly Procedure

1. Remove the cylinder head nuts (10mm).

**INSPECTION NOTE:**

Inspect the cylinder head for deposits and abrasions.

1. If there are deposits they should be removed
  - a. Black oily deposits (indicating a rich mixture or improper oil type/quantity) can be removed with solvent
  - b. Crusty deposits (indicating dirt ingestion) can be removed with solvent and may require some scraping.
2. Abrasions
  - a. Pitting or erosion indicates detonation and may require cylinder head replacement, also
    - i. Retard the ignition timing
    - ii. Use a higher octane fuel
  - b. Missing chunks or indentations indicate broken hardware or ingested items - replace the cylinder head.

2. Remove the cylinder head outer.
3. Remove the cylinder head insert.
4. Remove the cylinder.

**INSPECTION NOTE:**

Inspect the cylinder bore for abrasions, deposits, and missing coating.

1. If abrasions: scrapes, scratches, pitting, etc... are found, replace the cylinder.
2. If deposits are all are found
  - a. Clean with muratic acid.
  - b. Once the deposits are removed, inspect for abrasions and missing surface coating.
    - i. If there are abrasions or missing coating, replace.
    - ii. If all looks well, the cylinder may be saved.

** WARNING**

Muratic acid can be dangerous. Follow the manufacturers instructions closely.

5. Remove the piston clip with a scribe.
6. Remove the piston pin with a piston pin remover.

**INSPECTION NOTE:**

Inspect the piston for abrasions and deposits on the top and sides and clean or replace as necessary.

**INSPECTION NOTE:**

Piston ring end gap should be between 0.008" (0.2 mm) and 0.020" (0.5 mm)

## Splitting the Cases

1. Remove the fasteners holding the two halves of the crankcase together.
2. Separate the cases with a proper case splitting tool.

**CAUTION:**

Take caution when handling the crankshaft. It is the main power transfer to the rest of the engine. If it is out of alignment, it will cause premature failure of your bearings which can lead to serious damage to the cylinder as well as the rest of the engine. Do not try to true the crank yourself. Truing the crank should be done professionally.

**CAUTION:**

- If you split the cases, check the gear tooth faces for chipping & signs of fatigue.
- Check the small needle bearings for fatigue. If the bearings are damaged, the engine cases should be checked to make sure the needle-bearing casing didn't oblong the bearing hole in the case.
- Needle bearings should be replaced every couple months of hard racing.



## Engine assembly

### **CAUTION:**

For any seals that are to be installed, apply a light amount of grease to the seals' ID, assembly lube on all bearings and a small amount of Loctite to the OD.

1. Press the three bearings into the respective holes in each case half.
2. Press in the crank seals such that the concave side faces the crank weights.
3. Press in the counter shaft seal (concave side faces inside of transmission)
4. Install the water pump assembly wire ring retainer
5. Press in the water pump assembly
6. Tap both ways axially then verify easy rotation.
7. Inspect the crankshaft for proper true geometry (no more than 0.002 ", 0.05mm, measured at bearing journal area while supported from the ends).

### **CAUTION:**

Insert a 7.05mm (0.278") shim between the crank throws before pressing on the crank.

8. Insert the case screws with the proper lengths at locations shown.

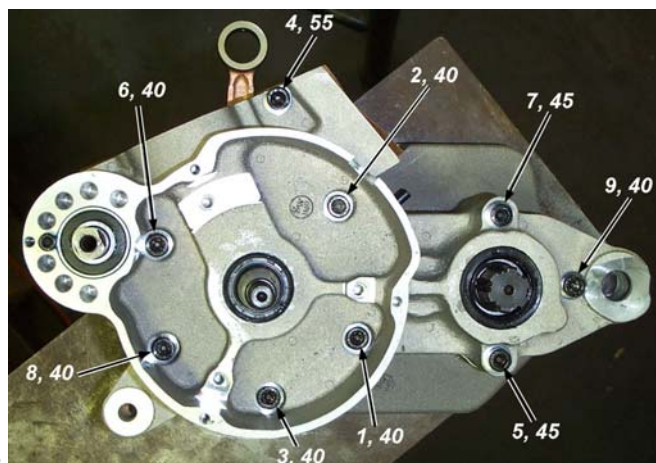


Figure 28

9. Torque to 12 Nm (105 in-lb) in the pattern shown in figure 28.
10. Trim away any excess gasket material if necessary.

**NOTE:** Check engine mount holes for excess material that may cause problems in engine installation.

11. Install the piston with new wrist pin bearing and, pin and clips.

### **CAUTION:**

Be sure to install the piston such that the arrow on the top piston surface points to the exhaust (front of bike/engine) and put assembly lube on the connecting rod bearing.

12. Install the piston rings.

**CAUTION:**

Ring end gap should be no less than 0.25 mm (0.010") and no more than 0.64mm (0.025")

13. Install the base gasket.

**CAUTION:**

See base gasket selection at the beginning of service section.

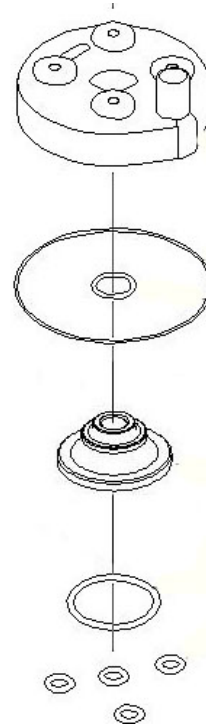
14. Install the cylinder being sure that the piston rings are properly aligned with the indexing pins.

**CAUTION:**

Never force the cylinder. If resistance is felt, determine the problem and solve it. Once installed slightly rotate the cylinder back and forth insuring that the rings are properly seated.

15. Install cylinder head insert.

Figure 29



**NOTE:** A light application of silicone grease can help hold the O-rings into position during assembly.

16. Install O-RINGS as shown in figure 29.

17. Install the cylinder head.

18. Install the washers (with flat side down) and nuts. Torque to 105 in-lb (12 Nm)

19. Install reed and inlet manifold with new gasket (105 in-lb, 12 Nm).

20. Leak check the engine to 20 psi to ensure proper seal.

21. Install stator reinstalling the grommet and wires (snug the bolts).

22. Install the rotor per *Rotor Installation* section, under the *S3: Ignition* portion of this manual.

23. Install the water pump outlet pipe (apply Ultra black Hi-Temp RTV silicon gasket maker to the threads before assembly) before installing the clutch and rotate to a vertical position with the engine resting on a bench

24. Install the CFD.

25. Install the clutch per *Clutch Installation* section in this manual.

26. Install the coolant drain plug with copper washer (11 ft-lb, 15 Nm).

27. Make sure that the exhaust spacer is on the cylinder (53 in-lb, 6 Nm).

28. Install the spark plug with a fresh gasket (to apply the proper torque to the spark plug when inserting, one must first screw the spark plug in until the metal gasket ring causes resistance and then turn another 1/8 to 1/4 turn).

# Clutch

## CAUTION:

The clutch components (arbor, shoes, bolt, and belleville washers) on your 2006 Cobra are similar looking but different in geometry from prior years. Do not mix old and new parts as damage will occur.

## Cobra clutch puller assembly:

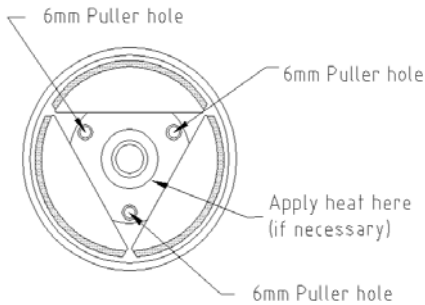


Figure 30

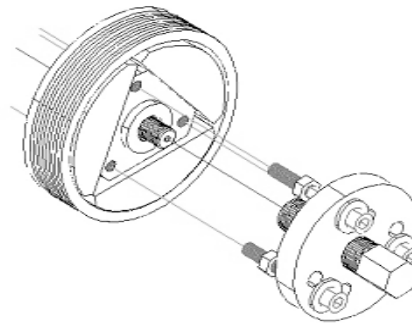


Figure 31 Clutch puller installation

## Tools recommended for clutch service:

- Universal clutch puller- a universal puller that pulls the clutch, main drive gear and rotor. (Part # MCMUTL70).
- 5mm T-handle
- Clutch nut removal tool (ECMU0078) & spanner wrench (ECMU0082).
- *Cobra 3 Shoe Clutch Milk* (Part # MCMUGF01).

## CLUTCH REMOVAL:

1. Drain the engine transmission oil and remove the clutch cover.
2. Remove the clutch nut (not left hand thread) on the end of the crankshaft with the clutch nut removal tool.
3. Attach the Universal Puller. There are three 6mm clutch puller holes located on the ends of the center hub. (figures 30 & 31)

## CAUTION:

Do not use a jaw type puller or use the 6mm tapped holes as jackscrews or you are likely damage the clutch or drum.

4. If necessary apply heat to the center clutch hub.

## CAUTION:

Do not heat the crankshaft threads or the aluminum shoes.

5. Keep tension on the puller as you are heating it.

## WARNING

The clutch will often pop off under tension from the puller and it will be very hot.

**CLUTCH WASHER STACKUPS:**

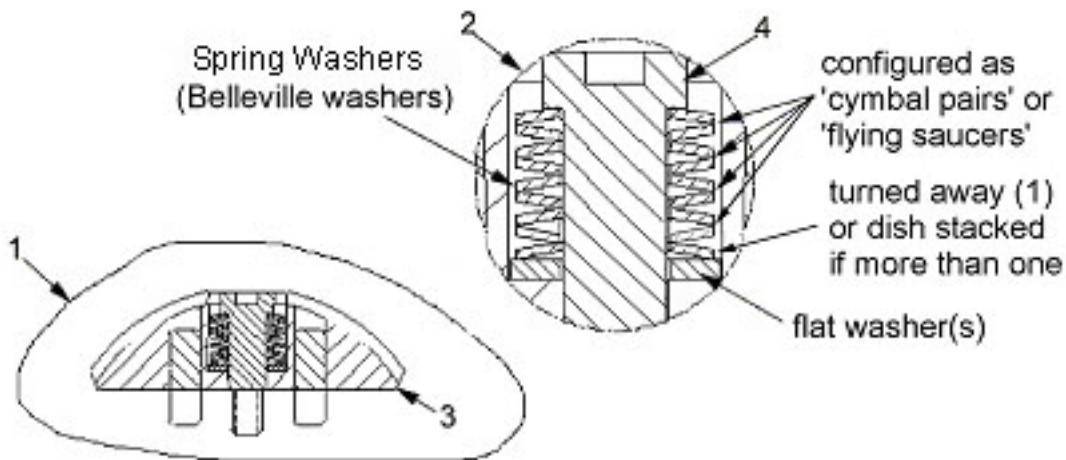
Once the clutch is removed, and cool to touch, carefully put it into a vice and remove the center shoulder bolt out of each clutch shoe. You will probably have to heat the center hub again to remove the bolts. Once you get a bolt loosened, carefully remove it with the shoe and observe the way the spring washers are stacked. Clean the washers and bolt if you intend to reuse.

The spring stacks in your Cobra clutch will contain 11 individual springs and flat washer(s) configured as a 5 ½ stack. See figure 32. This clutch is designed such that it reconfigured by the customer to achieve different clutch engagements 'hits' by changing washer counts and configurations.

**CAUTION:**

Generally reassemble the springs as you removed them from the engine or as you received them from Cobra. If you are unsure call the Cobra Technical Support Group 517 437 9100 #4, and consult the experts.

| CLUTCH ASSEMBLY REFERENCE DRAWING |          |                                                         |
|-----------------------------------|----------|---------------------------------------------------------|
| REF #                             | PART #   | DESCRIPTION                                             |
| 1                                 | CAMU0013 | Set of three shoes, springs, bolts, flat washers & nuts |
| 2                                 | CAMU0010 | Set Of three springs, washers, bolts & nuts             |
| 4                                 | HCBS0004 | One metric clutch bolt                                  |



**Figure 32** Some configuration of clutch spring stack. Each 'spring' stack contains multiple springs (Belleville washers) - arranged into three, four, or five 'flying saucers', or turned away against the flat washer(s). Shown is the 4 ½ stack..

| Stack | Total Springs | Flying Saucers or Cymbal Pairs | Turned Away or Dish Stacked | Std. Flat Washer |
|-------|---------------|--------------------------------|-----------------------------|------------------|
| 5 ½   | 11            | 5                              | 1                           |                  |

**Clutch adjustment washers**

Your Cobra comes stock with flat washer(s) at the bottom of the spring washer stack. Cobra offers several thicknesses of thin adjustment washers that allow clutch engagement tuning. Increasing the flat washer(s) thickness increases the

engine speed for clutch engagement thus increasing the abruptness of clutch engagement (harder hit). Conversely, decreasing the flat washer(s) thickness decreases the engine speed for clutch engagement thus decreasing the abruptness of clutch engagement (softer hit).

| Part #   | Thickness mm (inch) |
|----------|---------------------|
| HKCSM015 | 1.5 (0.060)         |
| HKCSM012 | 1.2 (0.047)         |
| HKCSM008 | 0.8 (0.031)         |
| HKCSM006 | 0.6 (0.025)         |
| HKCSM005 | 0.5 (0.020)         |
| HKCSM004 | 0.4 (0.015)         |

Use the table above to order adjustment washers. Replace the stock washer with the proper combination of adjustment washers that delivers the desired clutch hit.

| Hit                                         | Thickness (mm)  | Thickness (inch) |
|---------------------------------------------|-----------------|------------------|
| Softer <span style="float: right;">↑</span> | 0.8             | 0.031            |
|                                             | 0.9 (0.4 + 0.5) | 0.015 + 0.020    |
|                                             | 1.0 (0.5 + 0.5) | 0.020 + 0.020    |
| Harder <span style="float: right;">↓</span> | 1.1 (0.6 + 0.5) | 0.020 + 0.025    |

**CAUTION:**

It is easy to prematurely damage the clutch and other engine components with improper clutch adjustment. If you are unsure of how to adjust the clutch, by even the slightest, contact the Cobra Technical Support Group before making adjustments.

**Clutch shoe wear:**

- If the clutch has been slipping and shows signs of glazing, it is best to replace the shoes. We have found that once the shoes are glazed, even if deglazed with emery paper or a file, the performance is reduced.
- The best way to prevent glazing is by not gearing too high, changing the oil as specified and by not blipping the throttle. Every time you blip the throttle, you are working your clutch springs.

**CAUTION:**

The clutch produces a tremendous amount of heat and when a rider is blipping the throttle. This makes the clutch and clutch springs wear out quicker. This also makes your engine tend to run hotter which decreases engine power and degrades ignition stator efficiency. It is important to train your rider **NOT** to be a **throttle 'blipper'**.

**CAUTION:**

**Sludge build-up** between the spring washers also keeps the clutch shoe from engaging fully and this will cause the clutch to start to slip. So you will need to clean the sludge out or just replace the spring washers and bolts with new ones.

How quickly this sludge builds up depends on how often you **change your oil** and whether your rider is a throttle 'blipper'.

| REF # | PART NO.  | DESCRIPTION                                   |
|-------|-----------|-----------------------------------------------|
| 1     | ECMU0118  | Crank seal                                    |
| 2     | ECMU0040  | Clutch to hub spacer (standard 0.030" 0.76mm) |
|       | ECMU0040T | Clutch to hub spacer (thin, 0.015" 0.38mm)    |
| 3     | ECMU0119  | Needle bearing                                |
| 4     | ECMU0120  | Clutch basket with bearing                    |
| 5     | CAMU0005  | Clutch Complete w/ Arbor                      |
| 6     | ECMU0018  | Clutch nut                                    |
|       | CCMU0029  | Clutch arbor                                  |

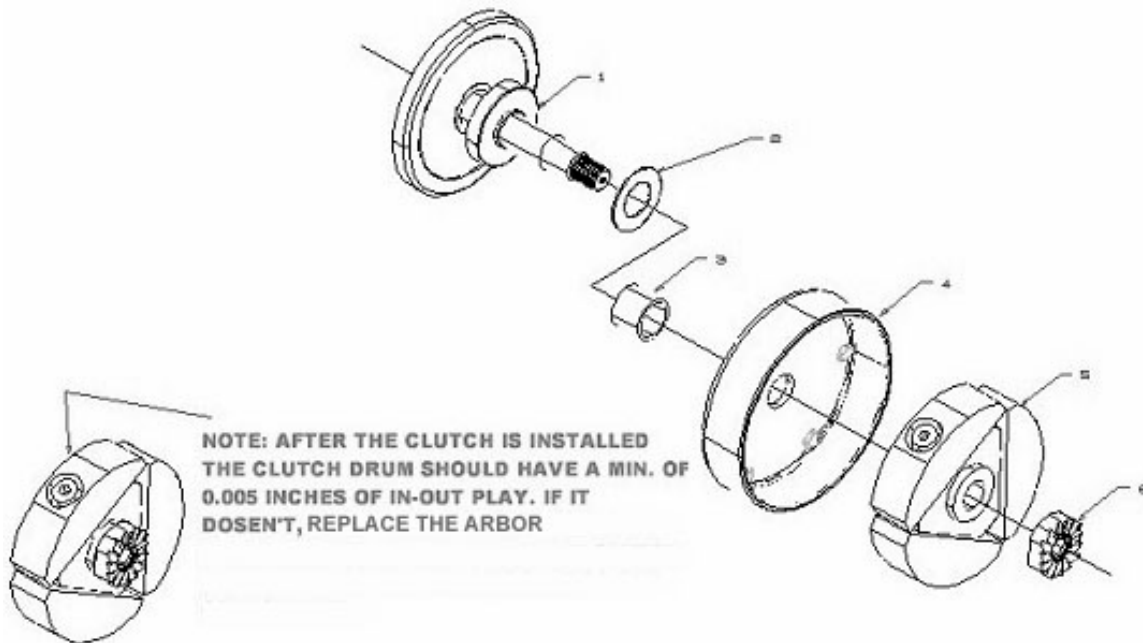


Figure 33, Clutch Assembly Drawing

## CLUTCH ASSEMBLY:

1. After cleaning or replacing the spring washers, reassemble the stack up of washers.

### CAUTION:

It is important to reassemble the washer stack to that which is recommended or to your own specialized stack.

### CAUTION:

It is also important that all three shoes are stacked the same. (See figure 32)

2. Clean the threads of the stack bolt and the clutch with contact cleaner removing all old thread locking material.
3. Apply high strength thread lock material to the stack bolt and tighten to 12 ft-lb (16 N-m).

**CAUTION:**

Avoid allowing excess thread lock material to contact the spring washers and the clutch or the clutch is likely to malfunction.

4. Clean the center hole of the clutch and on the tapered section of the crankshaft.
5. Apply a small amount of wicking / bearing retainer (green) thread lock agent to the center tapered section of the crankshaft and taper of clutch arbor.

**CAUTION:**

Lean the bike / engine such that any excess thread lock agent goes away from the bushing in the clutch drum.

6. Put the clutch back in.
7. Apply high strength thread locking agent to the threads and install the nut and torque to 35 ft-lb (47Nm) with the special socket (see figure 33).

**CAUTION:**

Use high strength (red) thread locker on the threads of the clutch nut. If you are using an impact socket, just zap it lightly with an air wrench to tighten it because there are only about 4 threads inside the nut and they can be easily stripped. If you are tightening it by hand, you can hold the crank from turning with the clutch removal spanner ECMU0082.

Install the clutch cover tightening the bolts from inside out. (8 or 10 mm socket, 5.8 ft-lb, 7.8 Nm).

**INSPECTION NOTE:**

- a. There must be in / out play in installed clutch, 0.4mm to 1.0 mm (0.015" to 0.040").
- b. Excess in/out will cause early crank seal failure.
- c. A blue clutch drum is worn out from excessive slippage or improper lubrication.

**NOTE:**

To ensure proper engagement of the kick gear with the starter nut, tighten the six screws only to the point of being not extremely loose. Using one hand rotate the kick lever to ½ stroke and hold while tightening the six screws completely with the other hand.

8. Fill with oil (235 ml (8.0 oz) *Cobra 3 Shoe Clutch Milk* (Part # MCMUGF01)).

## **Ignition**

### **Stator care**

Stator failure will result from running the bike hot. Following is a list of things that

will make your engine run hot.

1. The timing should not exceed the maximum specifications listed.
2. Improper carburetor jetting.
3. Improper spark plug heat range. Never run a hotter plug than the specified spark plug.
4. Clutch slippage. See “CLUTCH” section for causes of slippage.

**CAUTION:**

- Because of the amount of heat generated by the clutch and engine during extended periods of riding, it is advisable to remove the ignition cover afterward to allow the ignition to cool off. The heat transfers through the cases and can damage the stator as it cools off because of lack of airflow around the stator.
- Ignition will overheat if the gap between the rotor and stator is not large enough. There should be even clearance as the rotor rotates relative to the stator.
- Non-resistor spark plug caps should be used. Resistor caps will result in a weaker spark that will reduce performance.
- Make sure connections are free of dirt.

The proper ignition timing for this model of is at **0.040”** before Top Dead Center (that means 0.040” before the piston reaches the highest point of it’s travel in the cylinder).

**CAUTION:**

Advancing the ignition timing will cause the engine to run hotter, in-turn causing power loss, shortened clutch life, and possibly lead to premature stator failure, and can also cause detonation which can lead to premature piston and ring failure.

**Tools recommended for timing service:**

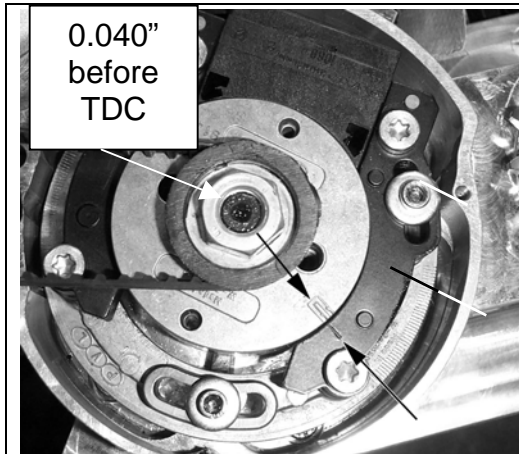
- Compact motorcycle dial indicator
- Universal clutch puller- a universal puller that pulls the clutch, main drive gear and rotor. (Part # MCMUTL70).

**TIMING YOUR IGNITION:**

1. Remove the spark plug.
2. Insert the dial indicator into the spark plug hole.
3. Remove the four bolts from the ignition cover.
4. Remove the water pump belt from the rotor and water pump shaft.
5. Turn the crankshaft counterclockwise until it reaches top dead center.
6. Set the dial indicator to zero
7. Turn the crankshaft clockwise until the dial indicator reaches 0.040” (1.02mm) from top dead center.



8. Line up the lines on the stator and the rotor (figure 35). Otherwise loosen the three 5mm bolts to adjust the stator.



**Figure 35,** Lining up the line on the rotor with the line on the stator.



**Figure 36,** Using a dial indicator to measure piston height for setting ignition timing.

#### **ROTOR INSTALLATION:**

1. Torque the nut on the rotor to 40 ft-lb (54 Nm) with high strength (red) thread locking agent.
2. Recheck the timing following the procedure of *timing your ignition*.
3. Install the water pump belt back on.
4. Bolt the ignition cover back on.
5. Put the spark plug back in, and firmly stick the spark plug cap onto the spark plug.

## **Cooling System**

The water pump in the engine keeps the radiator fluid in circulation throughout the motor. The air stream running through the radiator cools the radiator fluid. Therefore dirty radiators additionally reduce the cooling effect.

#### **Radiator fluid removal:**

1. Remove the coolant drain plug (A) on the front of the engine case (figure 37).

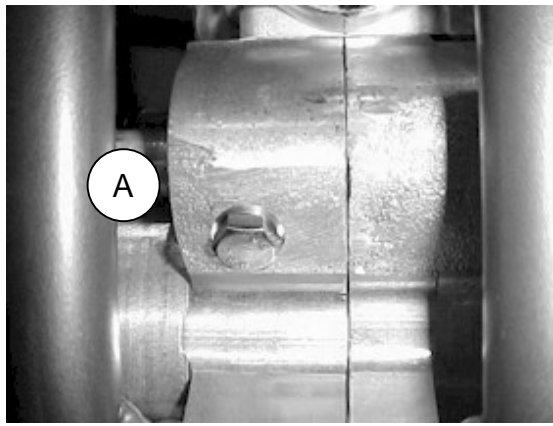


Figure 37

**To remove radiator cap:**

1. Turn the cap counter clockwise to the first stop and wait there for a few seconds.
2. Push the cap down and turn it further in the same direction and remove the cap.

**NOTE:** Inspect the old coolant for visual evidence of corrosion and abnormal smell.

**Tools recommended for impeller service:**

- Flat head screwdriver
- 13mm- hex wrench
- 3mm hex key
- 4mm hex key
- 5mm hex key
- 8mm hex key
- Propane torch
- 3/8" diameter x 8" long steel rod
- Hammer

**COBRA IMPELLER SERVICE INSTRUCTIONS**

1. Remove exhaust pipe and gas tank (you may be using a propane torch in step 12).
2. Remove radiator cap and drain engine coolant by removing the 13mm- hex head coolant drain plug.
3. If the impeller is damaged or broken completely back flush the coolant system to ensure no solid pieces are in the system.
4. Drain engine transmission oil by removing drain screw using a 13mm- hex wrench. (item 2 in the figure below).
5. Remove right side radiator hose and unscrew coolant fitting with a 8mm hex key.
6. Remove ignition cover using a 4mm hex key (four places)
7. Stick a 3mm hex key in the water pump shaft cross hole, and remove belt retainer screw using a 4mm hex key. (Figure 41 - item 1)
8. Remove belt retainer, water pump belt and water pump fan pulley.
9. Remove bearing retainer screw using a 3mm hex key. (Figure 38 – item 2)

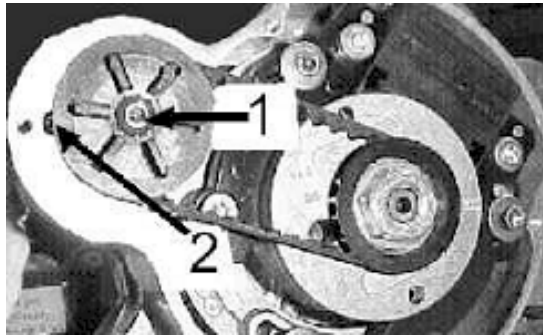


Figure 38

10. Heat engine case around area of impeller lightly with a small propane torch. Using a 3/8" diameter x 8" long steel rod, tap impeller assembly out of engine as shown in figure 39.

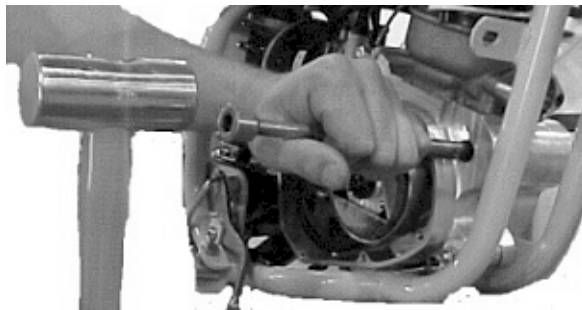


Figure 39

**CAUTION:**

Too much heat can be detrimental to the engine cases.

11. The shaft assembly is serviceable. Use a 4mm hex key to remove impeller retainer screw. Remove impeller, seal and both bearings. Check shaft for wear in the area of the seal. If there is any sign of wear (like a groove) replace the shaft.

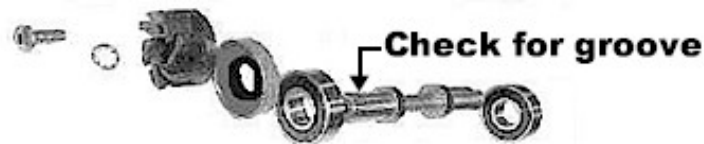


Figure 40

12. Reinstall new bearings, seal (open side toward impeller) and impeller. Clean all threads and use green (wicking / bearing retainer) thread locker.
13. Using a liberal amount of grease on the outside seal, bearings and inside of case, reinstall bearing assembly by using a 0.500" ID by 1.000" OD steel tube 2" long and tap on end of tube per figure 41.

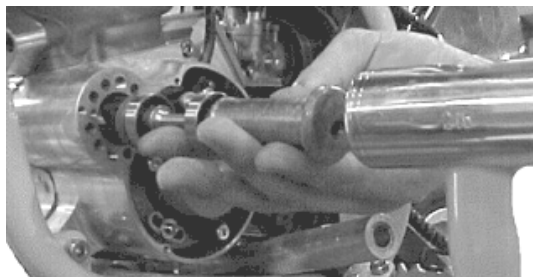


Figure 41

14. Re-assemble in reverse order of disassembly.

**CAUTION:**

Clean all threads and use blue (medium strength) thread locker on the belt retainer screw.

**NOTE:**

Apply Ultra black Hi-Temp RTV silicon or Teflon pipe sealant to the tapered pipe threads of the coolant fitting before assembly.

**NOTE:**

Refill the coolant system with 50/50 antifreeze-coolant / distilled water.

**CAUTION:**

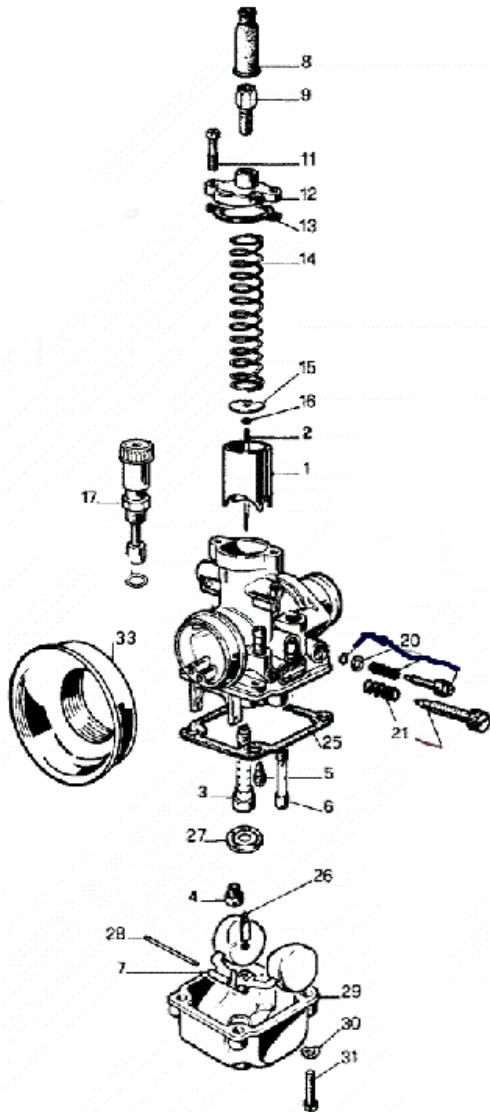
Do not mix Propylene Glycol based coolant / antifreeze solutions with Ethylene Glycol based coolant / antifreeze solutions.

# Fuel & Air System

## Carburetor:

### Tools recommended for carburetor service:

- Small flat head screwdriver
- WD-40
- 8mm socket



| CX50 SR Carburetor Ref. Drawing |          |                       |
|---------------------------------|----------|-----------------------|
| REF. #                          | PART #   | DESCRIPTION           |
| 1                               | RCMU0305 | CARB SLIDE            |
| 2                               | RCMU0601 | NEEDLE                |
| 3                               |          | ATOMIZER AU2.62       |
| 4                               |          | MAIN JET              |
| 5                               |          | PILOT JET             |
| 6                               |          | CHOKE JET             |
| 7                               | RCMU0301 | FLOAT                 |
| 8                               | RCMU0102 | RUBBER CABLE CAP SEAL |
| 9                               | RCMU0003 | CABLE ADJUSTOR        |
| 10                              |          |                       |
| 11                              | RCMU0006 | TOP CARB SCREW        |
| 12                              | RCMU0106 | CARB TOP              |
| 13                              | ZCMU0007 | TOP CARB GASKET       |
| 14                              | RCMU0004 | SLIDE SPRING          |
| 15                              | RCMU0205 | NEEDLE RETAINER PLATE |
| 16                              | RCMU0007 | NEEDLE CLIP           |
| 17                              | RCMU0204 | CHOKE ASS'Y. 2001 CM  |
| 20                              | RCMU0009 | FUEL MIXTURE SCREW    |
| 21                              | RCMU0011 | IDLE ADJUSTMENT SCREW |
| 25                              | RCMU0103 | FLOAT BOWL GASKET     |
| 26                              | RCMU0107 | FLOAT NEEDLE          |
| 27                              | RCMU0012 | DIFFUSER              |
| 28                              | RCMU0016 | FLOAT RETAINER PIN    |
| 29                              | RCMU0106 | FLOAT BOWL            |
| 30                              | RCMU0201 | BOTTOM FLOAT SCREW    |
| 31                              |          |                       |
| 33                              | RCMU0269 | VELOCITY STACK        |

Figure 42

Your Cobra is equipped with an adjustable carburetor. Some fine-tuning may be needed according to weather condition and altitude. Proper jetting is **very** important for engine performance and engine life. Serious damage to the engine can occur if not properly adjusted.

### IDLE ADJUSTMENT:

On the left side of the carburetor, there are two adjustment screws. The larger screw with the knurled head is the idle adjustment screw. To raise the idle, turn the screw in clockwise (in 1/4 turn increments) and rev the engine after each

adjustment. To lower the idle, turn the screw counter-clockwise.

### **TOP END JETTING:**

Indications that the engine is running too rich (too much fuel for the air) are:

- Engine not revving out or blubbering at high RPMs.
- Engine will not 'clean out'
- Wet or black spark plug

**NOTE:** Before changing jetting be sure that the air filter is properly cleaned and has the usual amount of air filter oil. An overly dirty air filter can cause the engine to run rich.

If the engine is running rich on the top end it should be leaned out. Leaning it out can be done by:

1. Changing the main jet to a smaller number.
2. Raising the needle clip (this lowers the jet needle) one notch at a time on the slide.

Indications that the engine is running too lean are:

- Engine cutting out on top end.
- Engine overheating and ultimately seizure.
- White spark plug

### **CAUTION:**

It is much safer to operate the engine slightly rich as opposed to slightly lean. This is because an overly rich engine will just run poorly while an overly lean engine will seize, potentially causing an expensive top end rebuild and a DNF.

To richen the carburetor:

1. Change the main jet one number at a time (larger).
2. Lower the needle clip (raising the jet needle) one notch at a time until the engine starts to blubber on the top end, then move the clip back up one notch or until you get the blubber out.

### **FUEL MIXTURE SCREW**

The smaller brass screw that is towards the front of the engine is a fuel mixture screw. This screw will also richen and lean your engine more on the bottom and mid-range. In warmer conditions, turn the screw in. In colder conditions, turn the screw out. Be sure to keep the carburetor very clean and make sure you don't have water or dirt in the carburetor bowl. Use automotive carburetor cleaner or WD-40 to clean the carburetor inside and out.

### **STOCK CARBURETOR SETTINGS**

The 2007 CX50 SR stock carburetor settings from the factory are:

- 60 pilot jet
- 95 main jet

**Cleaning the carburetor:**

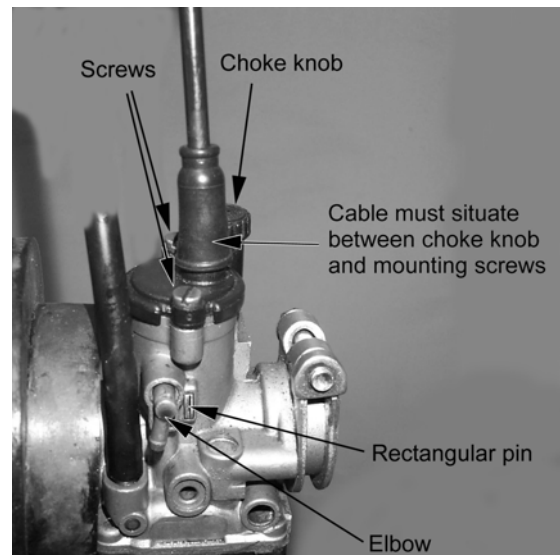
**⚠ WARNING**

Clean the carburetor in a well-ventilated area, and take care that there is no spark or flame anywhere near the working area; this includes any appliance with a pilot light. Because of the danger of highly flammable liquids, do not use gasoline or low flash-point solvent to clean the carburetor.

1. Make sure the fuel is shut off.
2. Remove the carburetor.
3. Drain the fuel from the carburetor.
4. Disassemble the carburetor.
5. Immerse all the metal parts in a carburetor cleaning solution.
6. After the parts are cleaned, dry them with compressed air.
7. Blow out the fuel passages with compressed air.
8. Assemble the carburetor
9. Install the carburetor onto the motorcycle.

**CAUTION:**

1. The motorcycle will only operate properly if the carburetor top is installed properly with the mounting screws, cable and choke knob oriented as shown in figure 43.



**Figure 43** Proper carburetor top installation and location of rectangular slide indexing pin and vent elbows.

## Reeds:

---

- The reeds must lay flat on the reed cage.
- If the reed tips aren't lying flat, replace them immediately.
- The reeds must have a tight seal on the reed cage.
- If the reed is damaged in any way, replace it. This means cracks, chips, and ruptures. Anything abnormal, replace the reeds.

Take the reed cage out and hold it up to the light and look in through the cage. If you see light between the reed pedals and the frame, then replace the reeds. If you do not see light, then the reeds should be ok. (See figure 44)

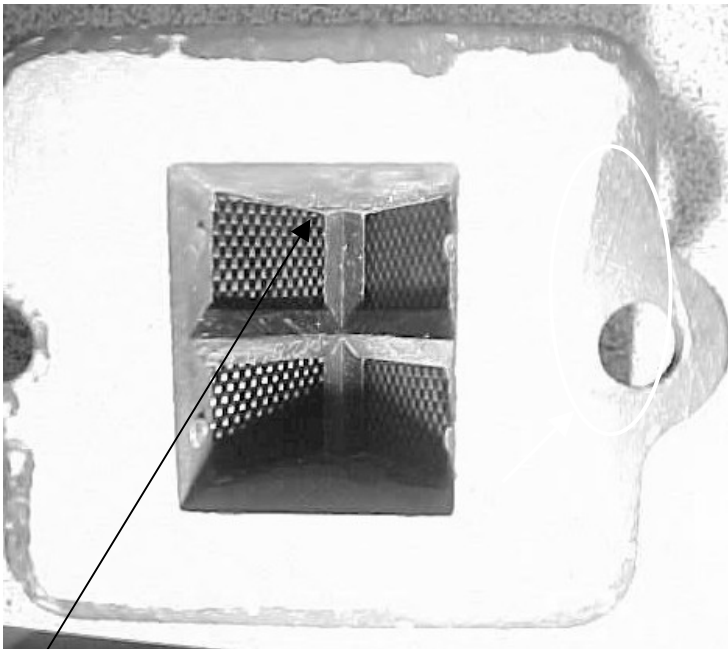


Figure 44

The presence of light indicates that the reeds should be replaced, or possibly turned over.

## Exhaust

The pipe is a crucial element to a motorcycle. Any kinks, dents, or damage done to the pipe will result in a major performance loss.

### NOTE:

Be sure to take the pipe off, and any carbon that may be built up. Carbon build up is created from exhaust. Exhaust has oils in it, and the oils cling to the walls of the inside of the pipe. Over a long period of time, the diameter of the pipe will decrease, due to carbon build up. So it is essential to clear the residue.

### CAUTION:

It is important to repack the silencer. Signs of your silencer needing to be repacked are:

- The bike is louder than normal.
- A loss of power.

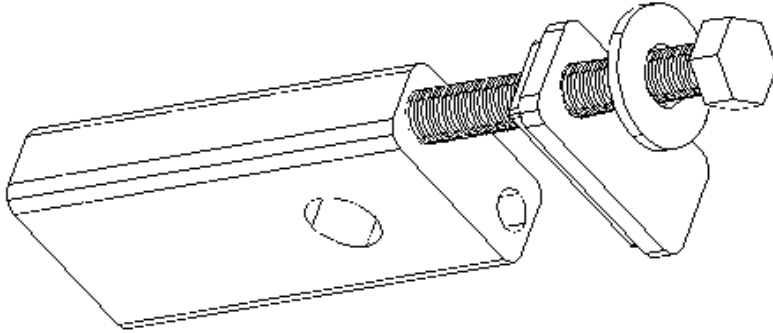


# Wheels & Tires

## Rear wheel pullers

---

### Disassembly:



1. Remove axle, and back wheel assembly.
2. Pull the rear wheel pullers out of the back of the swing arm.

Figure 45

### Rear wheel alignment:

By eye, ensure that the rear sprocket is running true (in-line, planar) with the front sprocket. When the sprockets are running true, the wheel is properly straightened, and the chain will run straight.

## Brakes

**WARNING!** Your brakes need a break-in period to achieve maximum brake power. 30-40 stops will bring the brake to peak performance.

Check before each ride:

- Make sure the brake does not have any leaks by holding the lever in while checking hose connections.
- Make sure the brake lever pressure is OK by pulling in on the lever and ensuring full braking performance is achieved before the lever touches the handlebar. If this is not the case, pump the lever several times until the lever feels firm.
- Always make sure the rotor and brake pads are free from oil and grease. Clean the rotor with mild dish soap or alcohol. Contaminated pads must be replaced.
- Always leave adequate free-play in the lever or pedal.

### CAUTION:

This brake system uses only DOT 4 or 5.1 brake fluid!

This portion will be updated shortly. Check our website [www.cobramotorcycle.com](http://www.cobramotorcycle.com) for updates.

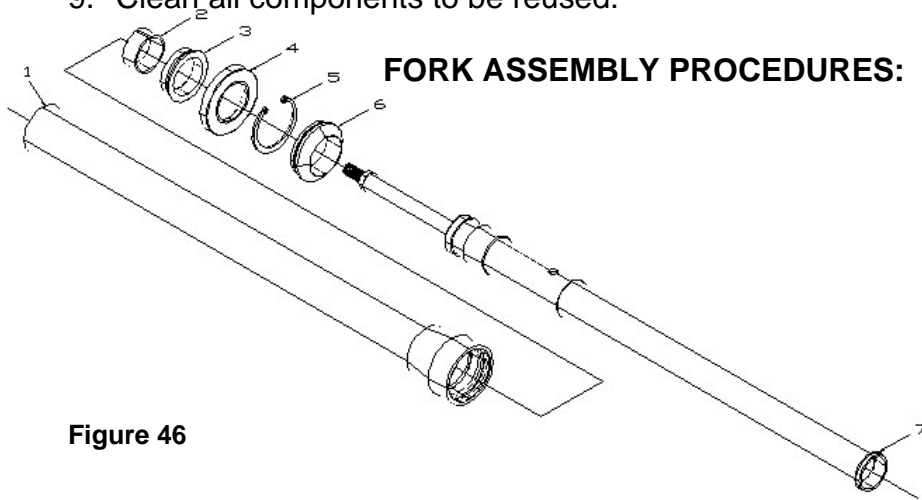
# Front Forks

## Tools recommended for front fork service:

- Flat head screwdriver
- Hammer
- Pick
- Seal driver MCMUTL02
- 9/16" (loose 14 mm) wrench
- 25mm wrench or socket
- 5 wt fork oil

## FORK DISASSEMBLY PROCEDURES:

1. Using the 25mm wrench, remove the fork cap.
2. Drain the fork oil into a suitable container.
3. Disconnect the fork cap from the damper rod (9/16" wrench & 25mm wrench).
4. Disconnect the damper assembly from the fork leg by removing the large aluminum bolt from the bottom of the fork leg (22mm wrench).
5. Pry the dust seal (swiper) from its position with a small screw driver.
6. Using a pick, remove the wire retaining ring holding the fork seals into place.
7. 'Pop' the fork seal out by forcibly pulling on both ends of the fork tube assembly, thus separating the inner from the outer tube.
8. Remove the bushings
9. Clean all components to be reused.



## FORK ASSEMBLY PROCEDURES:

Figure 46

### CAUTION:

Make sure all components are clean before assembly.

### CAUTION:

Be sure to apply oil to the new fork seal and other components before installing.

1. Slide dust seal (swiper) (#6) onto lower fork leg.
2. Slide retaining ring (#5) onto lower fork leg.

3. CAREFULLY slide seal (#4) onto lower fork leg with spring facing away from snap ring.

**CAUTION:**

It is helpful to cover the sharp corners of the fork leg with tape or thin plastic before sliding on the new seal. Also take care that the inner lip is not folded over when installing.

4. Slide bushing (#3) onto lower fork leg.
5. Install the glide ring into groove on lower fork leg.
6. Slide the bushing over the glide ring about 1/4" to hold the glide ring in the groove.
7. Insert the lower leg assembly into the upper fork tube about 5-6".
8. Use a seal driver to drive the seal into the upper tube.
9. Install the retaining ring. Make sure it is properly seated in the groove.
10. Snap the dust seal (swiper) into the groove in the upper tube.
11. Reinstall the damper cartridge assembly to the fork leg. Secure the large bolt with 22 mm wrench to 35 ft-lb with green thread locking agent.
12. Fill with 3.6 oz (107 ml) 5 wt fork oil should measure 6 mm (0.25") above the damper cartridge tube with spring removed. (This oil volume works out to leave an oil height of 120mm from top of outer tube with forks collapsed, damper rod down, and spring removed).
13. Install the fork spring
14. Connect the cartridge rod to the cap and tighten to 12 ft-lb (16 Nm).

**CAUTION:**

The damper rod is hollow and will break if the nut is over tightened (proper torque is 12 ft-lb, 16 Nm).

Because of different rider weights, sizes and riding styles, we offer various suspension options:

See *Optional Components* section of this manual for details on these and other optional components for your Cobra Motorcycle.

# Rear Shock

The rear shock is fully serviceable but it is recommended that only trained professionals should service your shock. Contact Cobra or PR2 for questions and service of your CX50 sr shock.

## Shock preload

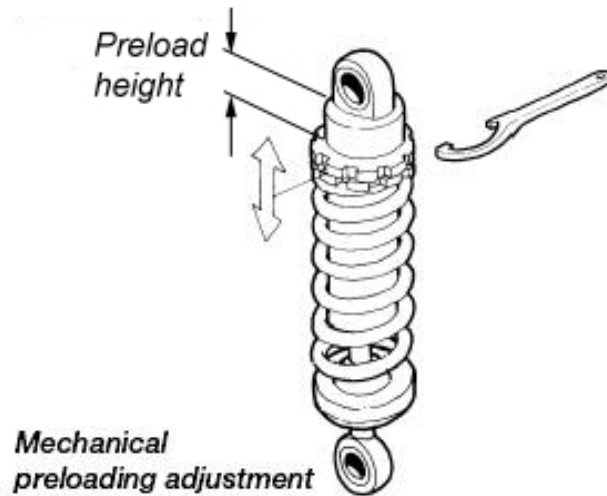


Figure 47

## Shock Damping

11. Adjustment of rebound damping

12. Adjustment of compression damping



Figure 48

# Tuning

## Gearing

For a bike with a centrifugal clutch, it's better to be geared too low than too high.

What happens with improper gearing?

- Poor performance
- Not enough top end speed
- No snap
- Over heat clutch
- Premature failure of engine seals, bearings, & electronics
- High clutch wear

| Condition                 | Gear Taller | Gear Lower |
|---------------------------|-------------|------------|
| Mud                       |             | ↓ ↓        |
| Sand                      |             | ↓          |
| Hills                     |             | ↓          |
| Hard Pack                 | ↑           |            |
| Throttle Blipper (novice) |             | ↓ *        |

\*It may be helpful to set up the clutch to hit early for smooth power delivery

| Front Sprocket |    | Rear Sprocket | Gear Ratio |      |
|----------------|----|---------------|------------|------|
|                |    | 15            | 33         | 2.20 |
|                |    | 15            | 34         | 2.27 |
|                |    | 15            | 35         | 2.33 |
|                | 14 |               | 33         | 2.36 |
|                |    | 15            | 36         | 2.40 |
|                | 14 |               | 34         | 2.43 |
|                |    | 15            | 37         | 2.47 |
|                | 14 |               | 35         | 2.50 |
|                |    | 15            | 38         | 2.53 |
| 13             |    |               | 33         | 2.54 |
|                | 14 |               | 36         | 2.57 |
|                |    | 15            | 39         | 2.60 |
| 13             |    |               | 34         | 2.62 |
|                | 14 |               | 37         | 2.64 |
|                |    | 15            | 40         | 2.67 |
| 13             |    |               | 35         | 2.69 |
|                | 14 | stock         | 38         | 2.71 |
|                |    | 15            | 41         | 2.73 |
| 13             |    |               | 36         | 2.77 |
|                | 14 |               | 39         | 2.79 |
|                |    | 15            | 42         | 2.80 |
| 13             |    |               | 37         | 2.85 |
|                | 14 |               | 40         | 2.86 |
| 13             |    |               | 38         | 2.92 |
|                | 14 |               | 41         | 2.93 |
| 13             |    |               | 39         | 3.00 |
|                | 14 |               | 42         | 3.00 |
| 13             |    |               | 40         | 3.08 |
| 13             |    |               | 41         | 3.15 |
| 13             |    |               | 42         | 3.23 |

Ratio Write © Cobra R&D  
2004

# Suspension

## Adjustment:

1. Front forks
  - 1.1. Fork oil
    - 1.1.1. Oil type
      - 1.1.1.1. Heavier weight oil – more damping – slower responding
      - 1.1.1.2. Lighter weight oil – less damping – quicker responding
    - 1.1.2. Oil quantity / level
      - 1.1.2.1. Greater quantity / higher level – greater bottoming resistance, stiffer near the end of the travel.
      - 1.1.2.2. Smaller quantity / lower level – less bottoming resistance, less stiff near the end of the travel.
  - 1.2. Fork spring
    - 1.2.1. Stiffer spring (higher spring rate) – stiffer throughout the travel.
    - 1.2.2. Less stiff spring (lower spring rate) – less stiff throughout the travel.
  - 1.3. Gas pressure – always bleed off any pressure.
  - 1.4. Fork height
    - 1.4.1. Rise in clamps for quicker turning.
    - 1.4.2. Lower in clamps for improved straight line stability.
2. Rear shock
  - 2.1. Preload adjustment
    - 2.1.1. More preload (greater distance) – less race sag.
    - 2.1.2. Less preload (smaller distance) – more race sag.
  - 2.2. Shock spring
    - 2.2.1. Stiffer spring – stiffer throughout the travel.
    - 2.2.2. Less stiff spring – less stiff throughout the travel.
  - 2.3. Compression damping
    - 2.3.1. Harder (more damping, slower) – adds resistance to the suspension motion when the suspension is compressing.
    - 2.3.2. Softer (less damping, quicker) – reduces resistance to the suspension motion when the suspension is compressing.
  - 2.4. Rebound damping
    - 2.4.1. Harder (more damping, slower) – adds resistance to the suspension motion when the suspension is returning to full length.
    - 2.4.2. Softer (less damping, quicker) - reduces resistance to the suspension motion when the suspension is returning to full length

### Front Forks Bottoming Too Frequently

### Fork oil level

If the front forks bottom harshly more than a couple of times per lap and the fork springs are proper for the weight of rider (as detailed above), try raising the fork oil level in increments of 10mm. Raising the fork oil level, reduces the air volume, and increases the stiffness of the forks late in the travel, thus adding a progressive' feel.

### Front forks feel too stiff over small bumps.

### Fork oil weight

If the forks feel too stiff over small bumps try decreasing the weight (increasing the viscosity) of the fork oil.

## Rear suspension troubleshooting.

## Damping

Always start with standard settings and make damping changes in no more than two click increments and only make one change at a time.

| Symptom                                 | Action                                   |
|-----------------------------------------|------------------------------------------|
| Rear end feels stiff on small bumps     | Softer compression damping               |
| Rear end 'sways' on straights           | Harder compression damping               |
| Bike tends to jump 'rear end high'      | Harder rebound damping                   |
| Bike tends to jump 'rear end low'       | Softer rebound damping                   |
| Frequent rear end bottoming             | Harder compression damping               |
| Bottoms after end of continuous bumps   | Softer rebound damping                   |
| Rear end 'kicks' over square edge bumps | 1) Harder rebound, 2) Softer Compression |
|                                         |                                          |
|                                         |                                          |

## Proactive Suspension Adjustments

Once you have the suspension adjusted for decent overall feel, you can make proactive adjustments when faced with different racing conditions.

| Situation        | Actions                                                           |
|------------------|-------------------------------------------------------------------|
| Sand track       | Lower the rear end (increase race sag).                           |
| Sand track       | Stiffer compression and rebound damping.                          |
| Long fast track  | Lower the forks in the clamps by 3 mm.                            |
| Tight slow track | Raise the forks in the clamps by 3 mm.                            |
| Mud track        | Lower the bike if the rider has difficulties touching the ground. |

## Carburetion

Although your Cobra is sent from the factory with the carburetor jetted for optimal performance, you may find it necessary to adjustment your particular jetting due to current weather conditions, altitude, fuel variations, and/or engine modifications.

### CAUTION:

Proper jetting is very important for engine performance and engine life. Symptoms of improper jetting are listed below.

- Symptoms of incorrect oil or oil / fuel ratio
  - Poor acceleration



- Misfire at low engine speeds
- Excessive smoke
- Spark plug fouling
- Excessive black oil dripping from exhaust system
- Symptoms of too rich a fuel mixture
  - Poor acceleration
  - Engine will not 'rev' out, blubbers on top
  - Misfire at low engine speeds
  - Excessive smoke
  - Spark plug fouling
  - Wet, black, or overly dark spark plug (when removed for inspection)
- Symptoms of too lean a fuel mixture
  - Pinging or rattling
  - Erratic acceleration
  - Same actions as running out of fuel
  - High engine temperature
  - White spark plug (when removed for inspection)

**NOTE:**

When inspecting the spark plug to evaluate jetting, a properly jetted machine will produce a spark plug that is dry and light tan in color.

| <b>Environmental and altitude related mixture adjustments</b> |                        |                            |
|---------------------------------------------------------------|------------------------|----------------------------|
| <b>Condition</b>                                              | <b>Mixture will be</b> | <b>Required adjustment</b> |
| Cold air                                                      | Leaner                 | Richer                     |
| Warm air                                                      | Richer                 | Leaner                     |
| Dry air                                                       | Leaner                 | Richer                     |
| Very humid air                                                | Richer                 | Leaner                     |
| Low altitude                                                  | Standard               | None                       |
| High altitude                                                 | Richer                 | Leaner                     |
| Low barometric pressure                                       | Richer                 | Leaner                     |
| High barometric pressure                                      | Leaner                 | Richer                     |

**NOTE:**

- Before making any carburetor jetting changes verify that:
  - You are using the proper fuel and oil
  - The fuel is fresh and uncontaminated
  - The oil and fuel have been mixed in the proper ratio
  - The carburetor is clean (no plugged jets)
  - The air filter is properly clean and oiled
  - The float height is within proper specification (proper measuring technique is described later in this section)

**NOTE:**

Perform all jetting changes on a motorcycle that has been warmed up to proper operating temperature.

The carburetor on your Cobra motorcycle is quite adjustable. Figure 49 shows its range of adjustment and in particular what adjustable component affects what

range of operation (specifically throttle position).

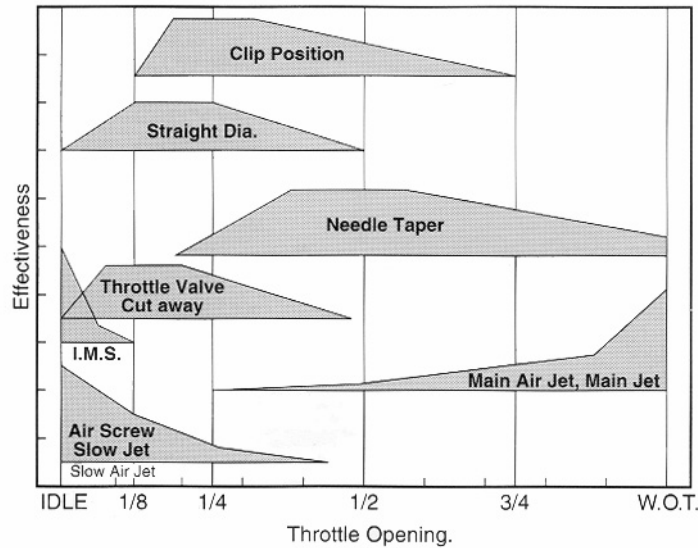


Figure 49

**FUEL SCREW ADJUSTMENT: Adjust for maximum idle speed**

The fuel adjustment screw is located on the left side of the carburetor. It is the smaller of the two adjustment screws and requires the use of a small flat blade screw driver for adjustment. After adjusting for maximum idle speed, use the idle screw to adjust the desired idle speed.

**NOTE:**

If the fuel screw requires more than 3 turns out, replace the pilot jet for one that is one size richer (larger number) then readjust the fuel screw.

**IDLE ADJUSTMENT: Adjust for desired idle speed**

The idle speed screw is located on the left side of the carburetor. It is the larger of the two screws on the side of the carburetor and is unique with its knurled head for easy fingertip adjustment. To raise the idle, turn the screw in, clockwise, (in 1/4 turn increments) and rev the engine after each adjustment. To lower the idle, turn the screw counter-clockwise.

**TOP END JETTING: Adjust for clean full throttle acceleration**

Jet your top end (main jet) based on the acceleration of your Cobra Motorcycle on the longest straight at the track. Observe any of the lean or rich symptoms (spark plug appearance and bike performance) listed above and change your jetting accordingly.

**PART THROTTLE Adjust for desired acceleration**

Using an area of the track that allows the rider to operate and mid throttle and transition (accelerate, or 'roll on') from closed, or mostly closed throttle, to a larger throttle opening. Observe the rich and lean symptoms listed above. Adjust the jet needle position by moving the clip from its current position (move the clip higher on the needle to make the bike run leaner, or move the clip lower on the needle to make the bike run richer) to one higher or lower.

# Troubleshooting

## **1) Engine operates erratically**

- a) Carburetor top is installed backwards
- b) The carburetor slide indexing pin is missing
- c) A carburetor vent elbow is plugged or has fallen out
- d) Faulty stator
- e) An air leak
  - i) Base gasket
  - ii) Intake / reed gaskets
  - iii) Crank seals
  - iv) Crank case gasket

## **2) Engine is down on power**

- a) Clutch engagement is not set properly
- b) Jetting is incorrect
- c) Silencer needs repacked
- d) Exhaust pipe
  - i) Has excess carbon buildup
  - ii) Has large dent in it
- e) Compression is low
  - i) Piston
  - ii) Rings
- f) Reeds are damaged
- g) Ignition timing is incorrect
- h) Stator needs replaced

## **3) Engine is excessively loud**

- a) Silencer needs repacking

## **4) Engine 'blubbers' at high RPMs**

- a) Jetting too rich
- b) Stator needs replaced

## **5) Engine won't start**

- a) Fuel
  - i) None in tank

- ii) Is sour or bad
  - b) Carburetor is dirty
  - c) Ignition
    - i) Spark plug fouled
    - ii) Spark plug cap off
    - iii) Engine Shut-off 'kill' switch is shorted
    - iv) Bad electrical ground
    - v) Stator winding damaged
  - d) Exhaust is plugged with object of flooded fuel
  - e) Engine is flooded
  - f) Cracked, broken, or jammed reed pedal
  - g) Excessive piston or cylinder wear
  - h) Clutch bolt or shoe dragging on basket (drum).
- 6) Engine won't idle**
- a) Idle knob needs adjusted
  - b) Carburetor jets are dirty

## Index

|                                                                                                                                                                                                                                                                                                                                                                                                                              |                                                                                                                                                                                                                                                                                                                                                                                                       |
|------------------------------------------------------------------------------------------------------------------------------------------------------------------------------------------------------------------------------------------------------------------------------------------------------------------------------------------------------------------------------------------------------------------------------|-------------------------------------------------------------------------------------------------------------------------------------------------------------------------------------------------------------------------------------------------------------------------------------------------------------------------------------------------------------------------------------------------------|
| Air Filter ..... 17<br><br>Bars and Controls ..... 23<br>Base Gasket Selection..... 44<br>Break-In ..... 9<br><br>Carburetor<br>Parts..... 24<br>Service ..... 61<br>Specifications ..... 6<br>CFD Cobra Frictional Drive ..... 21<br>Chain<br>Adjustment ..... 15<br>Chassis<br>Specification ..... 6<br>Clutch<br>Parts..... 28<br>Service ..... 51<br>Clutch Lubricant<br>Replacing ..... 13<br>Compression test ..... 44 | Cooling System .....57<br>Cylinder head<br>torque .....7<br><br>Electrical<br>Parts .....26<br>Engine<br>Specifications .....6<br>Exhaust .....64<br>Parts .....31<br><br>Fork oil replacement.....20<br>Forks<br>Parts .....32<br>Service.....66<br>Frame Parts .....34<br>Frictional Drive .....21<br>Front Brake<br>Parts .....36<br>Front Wheel Parts .....37<br>Fuel System<br>Parts list.....61 |
|------------------------------------------------------------------------------------------------------------------------------------------------------------------------------------------------------------------------------------------------------------------------------------------------------------------------------------------------------------------------------------------------------------------------------|-------------------------------------------------------------------------------------------------------------------------------------------------------------------------------------------------------------------------------------------------------------------------------------------------------------------------------------------------------------------------------------------------------|

|                                 |        |                           |    |
|---------------------------------|--------|---------------------------|----|
| Service .....                   | 61     | Shock.....                | 41 |
| Hardware                        |        | Swingarm.....             | 42 |
| Frame.....                      | 34     | Top End .....             | 30 |
| Plastic.....                    | 38     | Triple Clamps .....       | 32 |
| Ignition                        |        | Plastic & Seat Parts..... | 38 |
| Parts.....                      | 29     | Pullers .....             | 65 |
| Service .....                   | 55     | Rear Brake                |    |
| Timing .....                    | 56     | Adjustment.....           | 15 |
| Jetting                         |        | Parts .....               | 39 |
| How To.....                     | 61     | Rear Wheel                |    |
| Stock .....                     | 6      | Parts .....               | 40 |
| Troubleshooting.....            | 72     | Pullers.....              | 65 |
| Lubrication                     |        | Reeds.....                | 64 |
| Recommended .....               | 6      | Shock                     |    |
| Maintenance                     |        | Parts .....               | 41 |
| Schedule .....                  | 11     | Service.....              | 74 |
| Tips .....                      | 11     | Slip Clutch .....         | 21 |
| Oil                             |        | Spark Plug                |    |
| Recommended .....               | 6      | Recommended .....         | 6  |
| Optional components.....        | 7      | Specifications .....      | 6  |
| Parts                           |        | Starting.....             | 10 |
| Bars and Controls.....          | 23     | Stator                    |    |
| Bottom End & Transmission ..... | 27     | torque .....              | 8  |
| Carburetor .....                | 24     | Suspension .....          | 74 |
| Clutch & Kick Starter .....     | 28     | Swingarm Parts.....       | 42 |
| Coolant System .....            | 22, 25 | Top End                   |    |
| Electrical.....                 | 26     | Parts .....               | 30 |
| Engine .....                    | 27     | Service.....              | 43 |
| Exhaust .....                   | 31     | Torque Values .....       | 7  |
| Forks .....                     | 32     | Transmission Lubricant    |    |
| Frame.....                      | 34     | Replacing.....            | 13 |
| Front Brake .....               | 36     | Troubleshooting .....     | 75 |
| Front Wheel.....                | 37     | Jetting.....              | 72 |
| Ignition & Water Pump .....     | 29     | VIN reading .....         | 12 |
| Plastic & Seat.....             | 38     | WARNING .....             | 2  |
| Rear Brake .....                | 39     | Water Pump                |    |
| Rear Wheel .....                | 40     | Parts .....               | 29 |
|                                 |        | Wheels                    |    |
|                                 |        | Service.....              | 65 |